

# Upper Lovers Creek

## Town of Innisfil Stormwater Management

### SWM Units

#### SWMU-2

Upper Lovers Creek

#### Legend

##### MISC.STM\_SWMPond

- <all other values>

##### Subtype

- LID\_BioSwale
- LID\_ExfiltrationTrench
- LID\_RunoffRetention
- STMPond

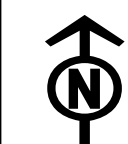
- NVCA Watercourses
- LSRCA Watercourse
- StormSewers
- PondC

- ▭ Catchment\_Areas
- ▭ <all other values>

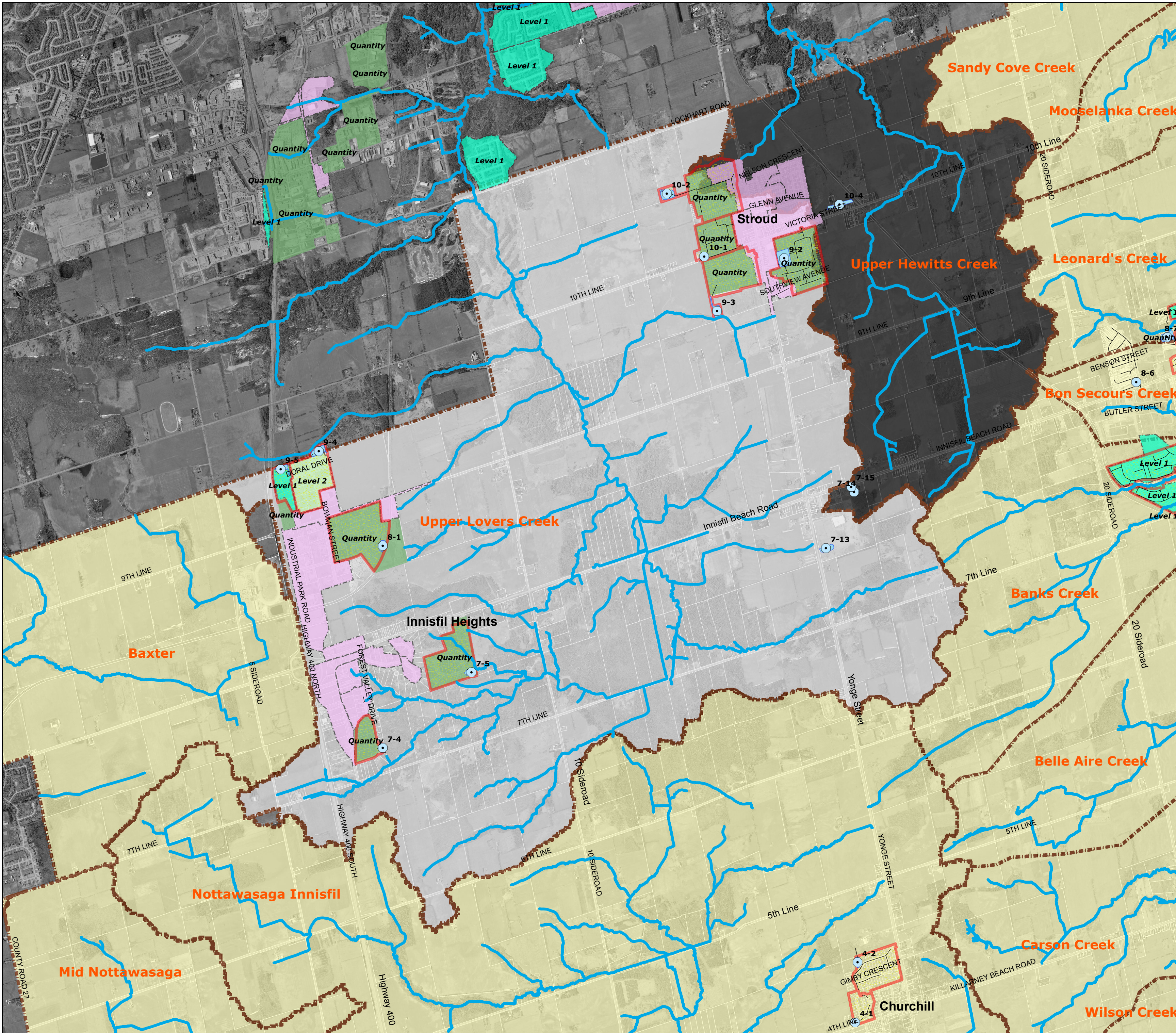
##### CONTROL

- ▭ Level 1
- ▭ Level 2
- ▭ Quantity
- ▭ Uncontrolled

0 295 590 1,180 Meters



SWMU-2



# Gilford Creek

## Town of Innisfil Stormwater Management

### SWM Units

#### SWMU-3

Gilford Creek

#### Legend

##### MISC.STM\_SWMPond

● <all other values>

##### Subtype

- LID\_BioSwale
- LID\_ExfiltrationTrench
- LID\_RunoffRetention
- STMPond

— NVCA Watercourses

— LSRCA Watercourse

— StormSewers

■ PondC

■ Catchment\_Areas

■ <all other values>

##### CONTROL

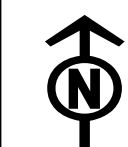
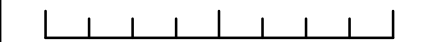
■ Level 1

■ Level 2

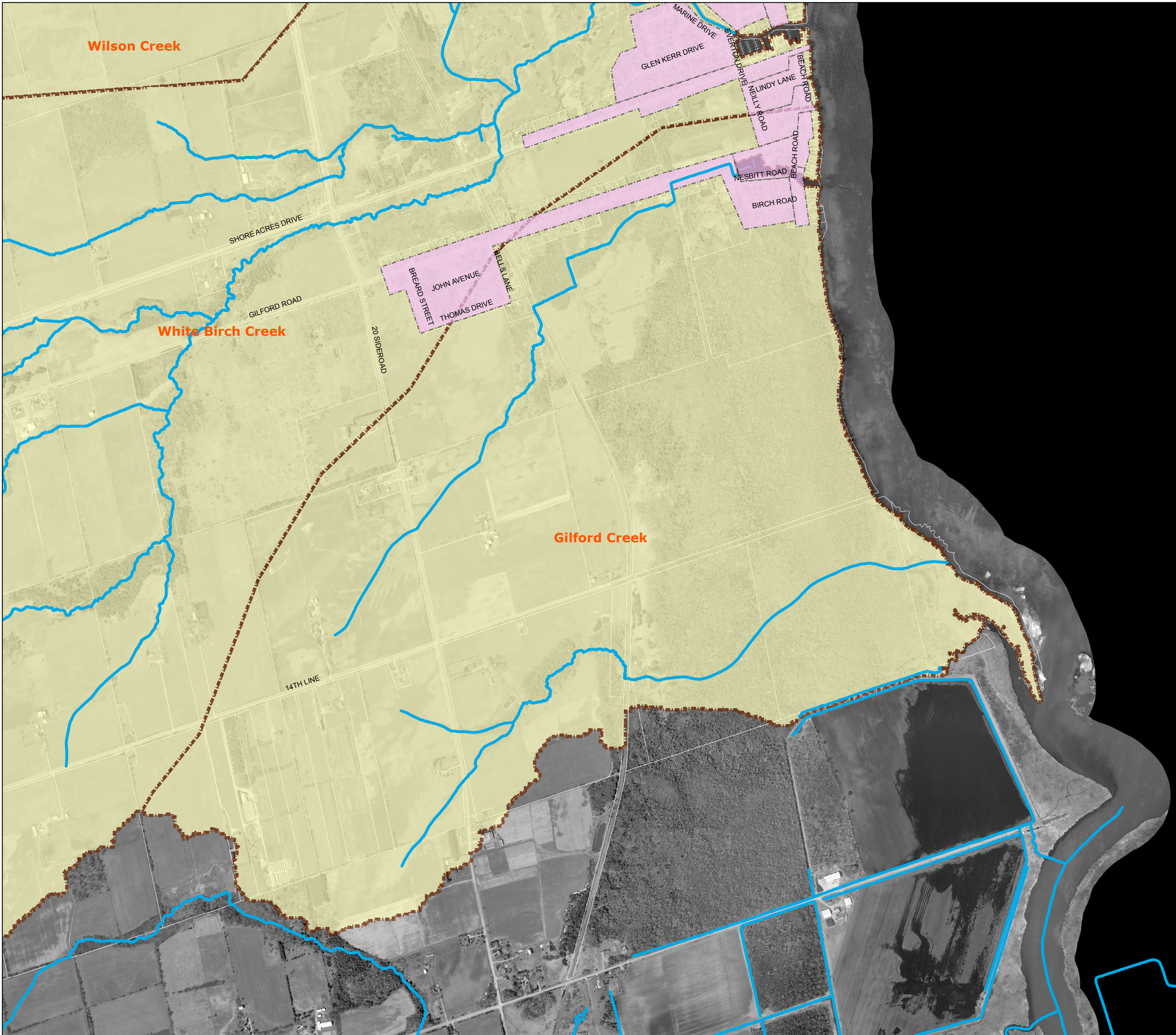
■ Quantity

■ Uncontrolled

0 112.5 225 450 Meters



SWMU-3



# Innisfil - Strathallan North

## Town of Innisfil Stormwater Management

### SWM Units

#### SWMU-4

Innisfil - Strathallan North

#### Legend

##### MISC.STM\_SWMPond

● <all other values>

##### Subtype

- LID\_BioSwale
- LID\_ExfiltrationTrench
- LID\_RunoffRetention
- STMPond

— NVCA Watercourses

— LSRCA Watercourse

— StormSewers

■ PondC

■ Catchment\_Areas

■ <all other values>

##### CONTROL

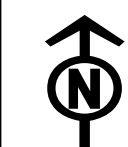
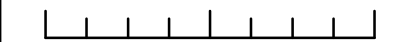
■ Level 1

■ Level 2

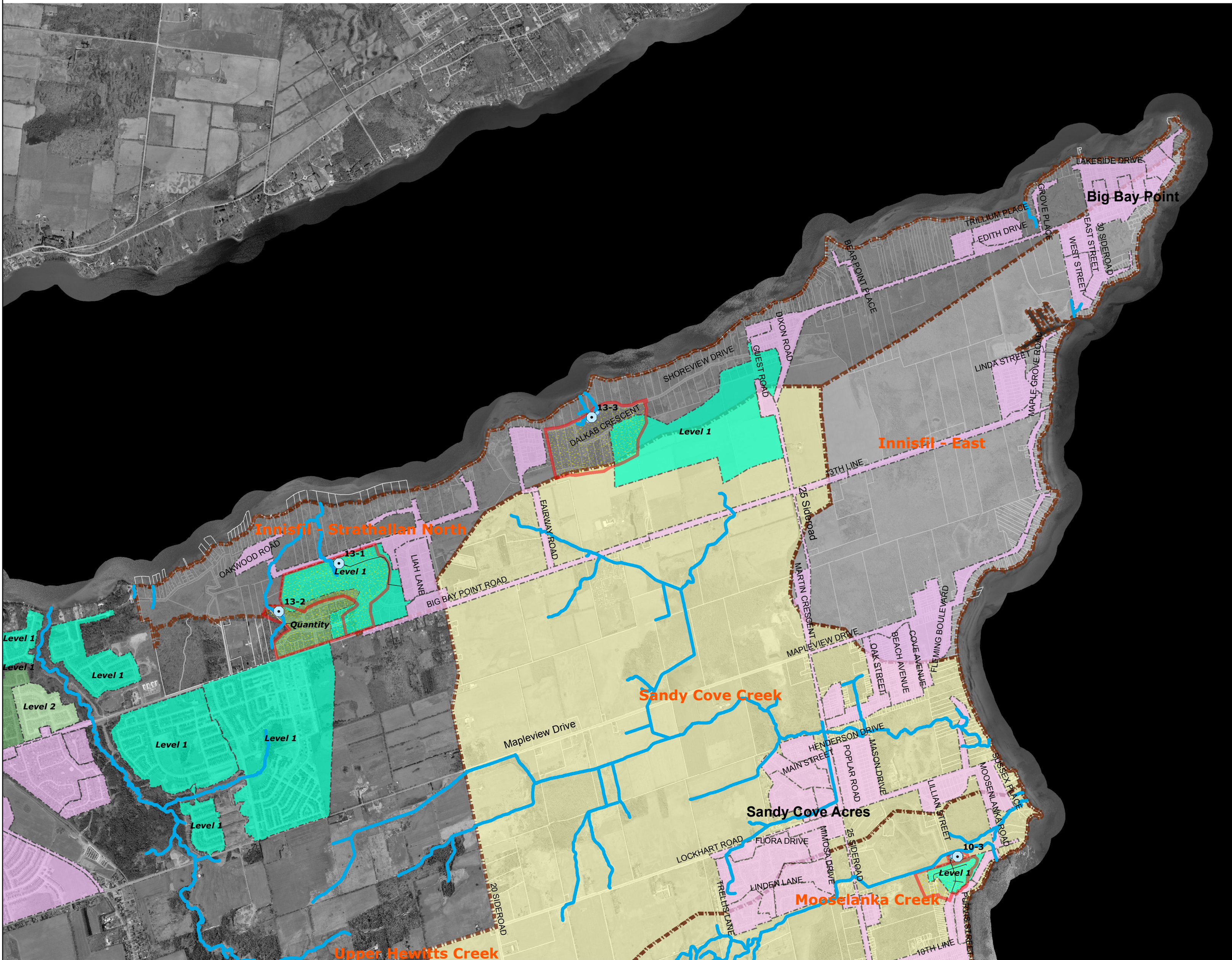
■ Quantity

■ Uncontrolled

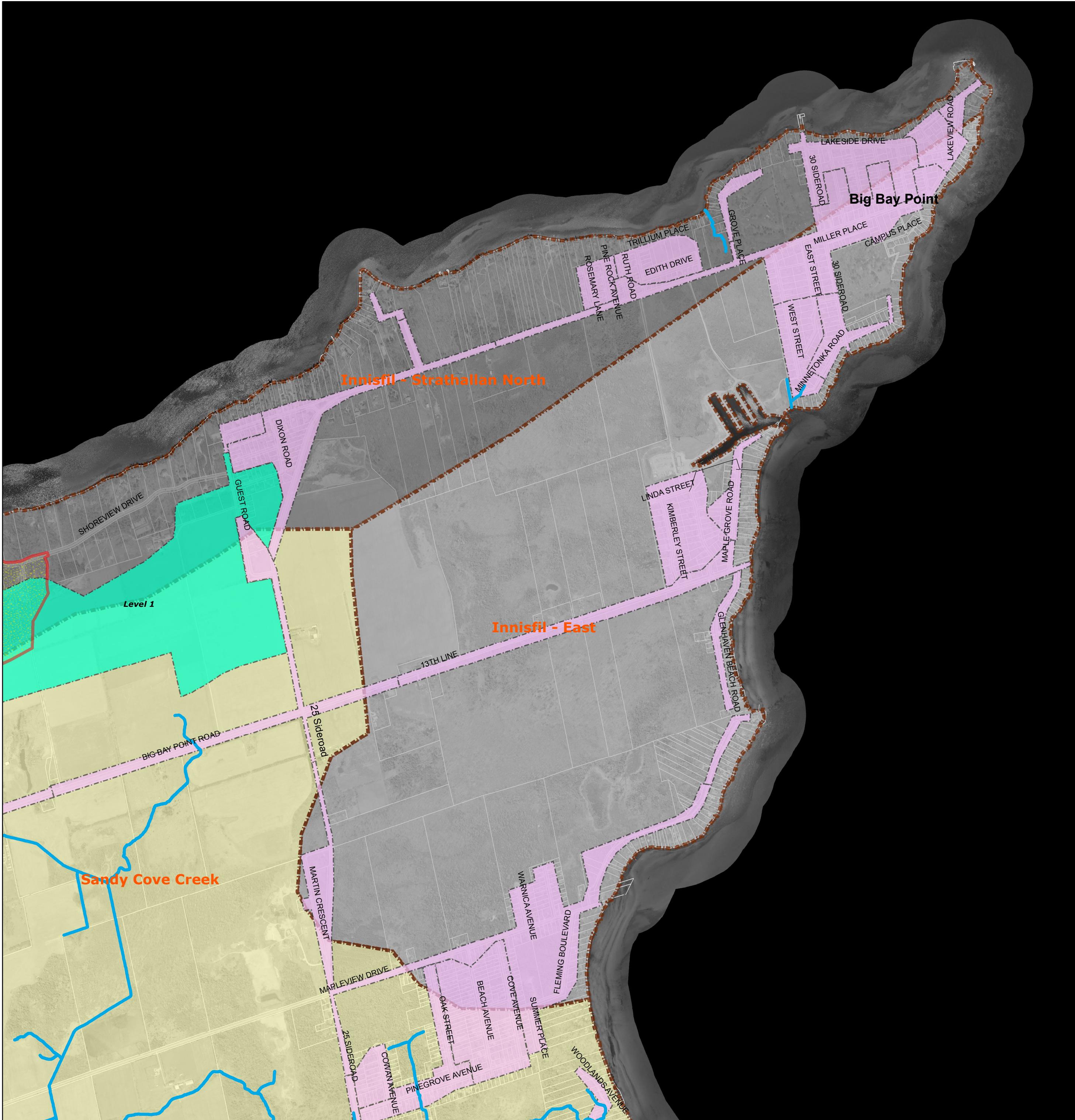
0 265 530 1,060 Meters



SWMU-4



# Innisfil - East



## Town of Innisfil Stormwater Management

### SWM Units

#### SWMU-5

Innisfil - East

#### Legend

##### MISC.STM\_SWMPond

● <all other values>

##### Subtype

- LID\_BioSwale
- LID\_ExfiltrationTrench
- LID\_RunoffRetention
- STMPond

— NVCA Watercourses

— LSRCA Watercourse

— StormSewers

■ PondC

■ Catchment\_Areas

■ <all other values>

##### CONTROL

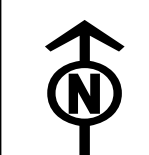
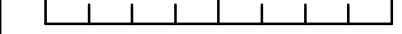
■ Level 1

■ Level 2

■ Quantity

■ Uncontrolled

0 155 310 620 Meters



SWMU-5

# Sandy Cove Creek

## Town of Innisfil Stormwater Management

### SWM Units

#### SWMU-6

Sandy Cove Creek

#### Legend

##### MISC.STM\_SWMPond

- <all other values>
- LID\_BioSwale
- LID\_ExfiltrationTrench
- LID\_RunoffRetention
- STMPond

##### Subtype

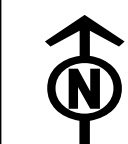
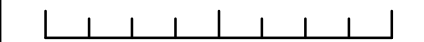
- LID\_BioSwale
- LID\_ExfiltrationTrench
- LID\_RunoffRetention
- STMPond

- NVCA Watercourses
- LSRCA Watercourse
- StormSewers
- PondC
- Catchment\_Areas
- <all other values>

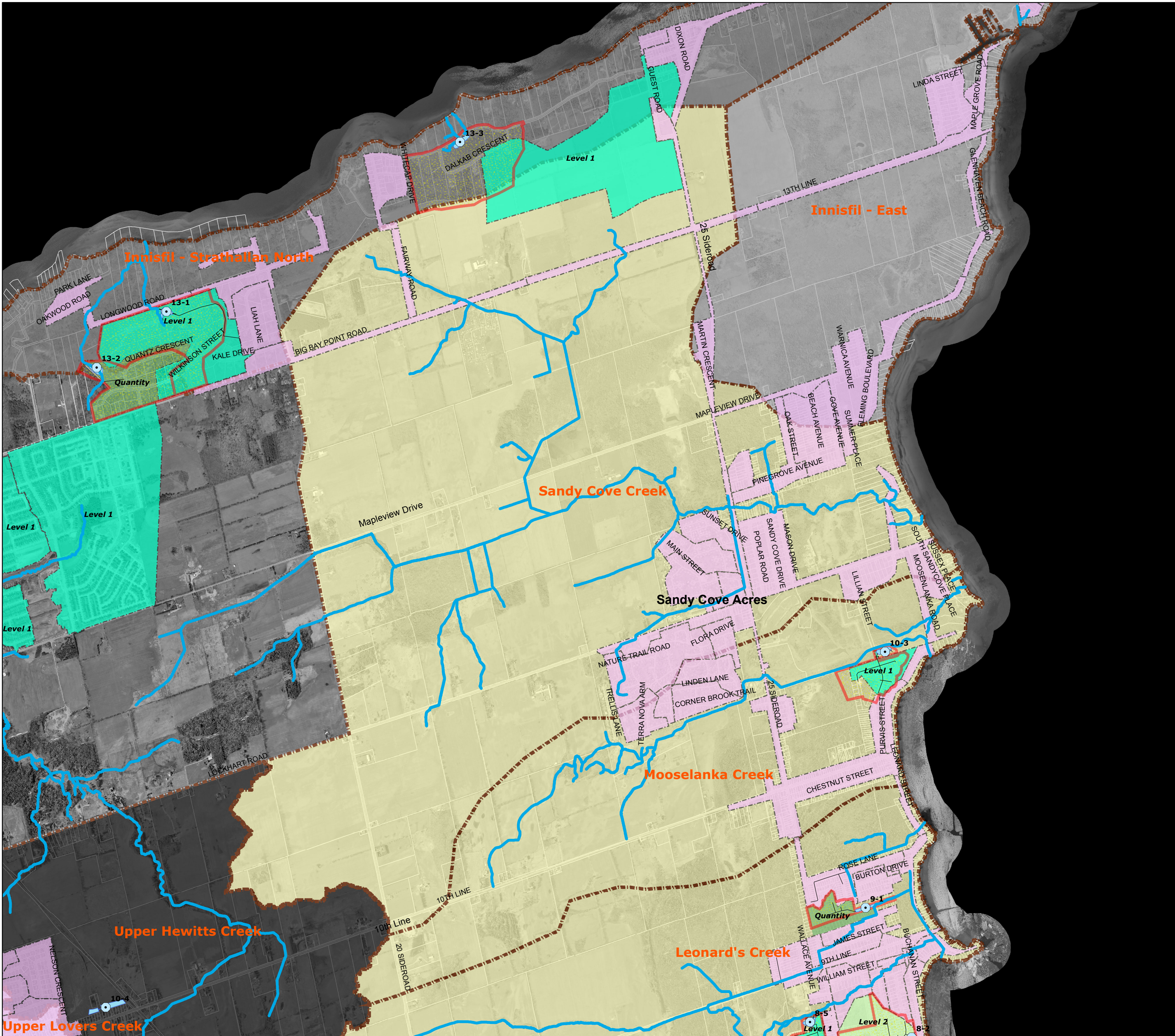
##### CONTROL

- Level 1
- Level 2
- Quantity
- Uncontrolled

0 215 430 860 Meters



SWMU-6



# Mooselanka Creek

## Town of Innisfil Stormwater Management

### SWM Units

### SWMU-7

Mooselanka Creek

#### Legend

##### MISC.STM\_SWMPond

● <all other values>

##### Subtype

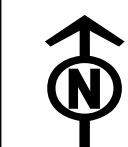
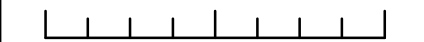
- LID\_BioSwale
- LID\_ExfiltrationTrench
- LID\_RunoffRetention
- STMPond

- NVCA Watercourses
- LSRCA Watercourse
- StormSewers
- PondC
- Catchment\_Areas
- <all other values>

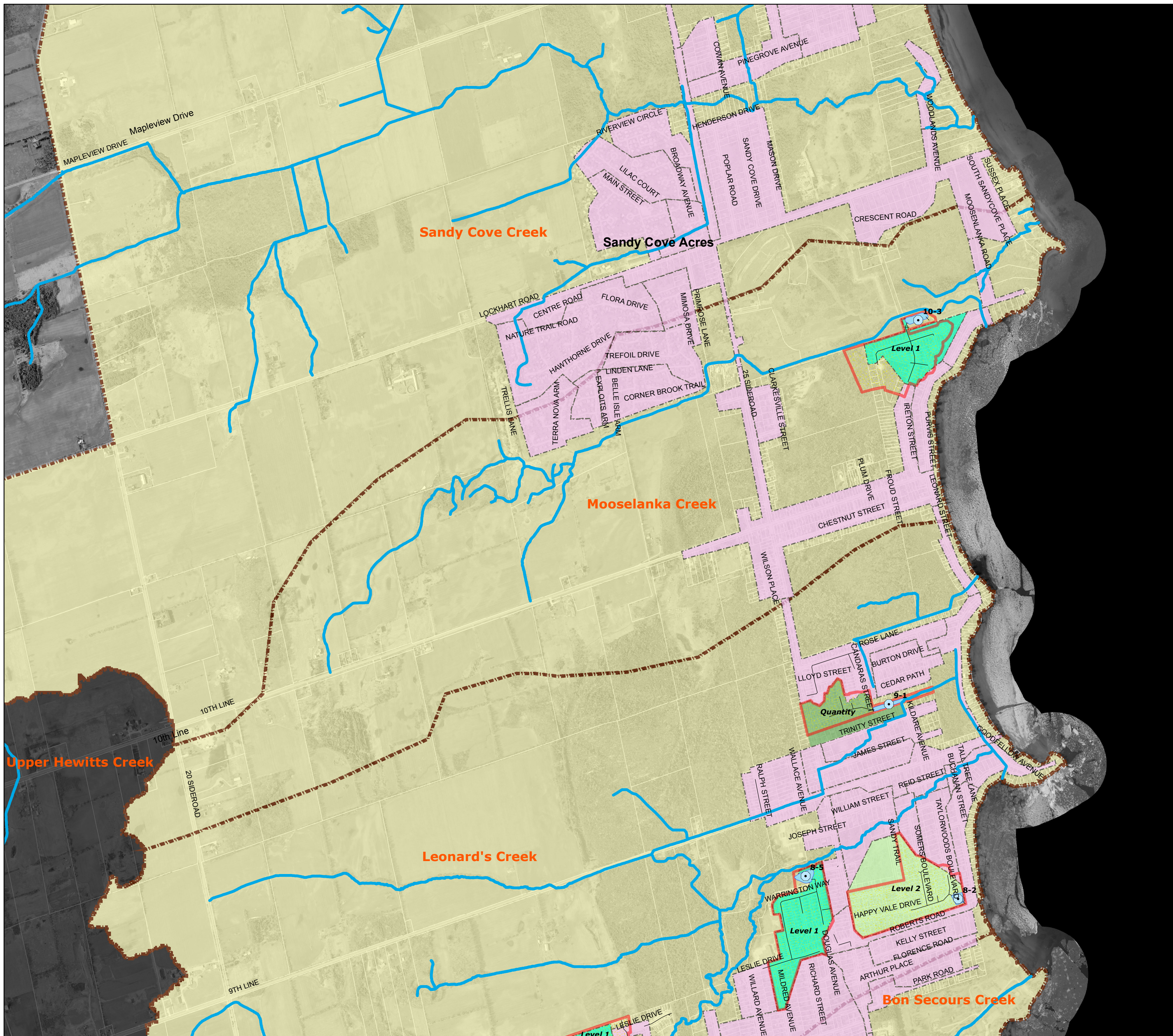
##### CONTROL

- Level 1
- Level 2
- Quantity
- Uncontrolled

0 140 280 560 Meters



SWMU-7



# Bon Secours Creek

## Town of Innisfil Stormwater Management

### SWM Units

#### SWMU-8

Bon Secours Creek

#### Legend

##### MISC.STM\_SWMPond

• <all other values>

##### Subtype

- LID\_BioSwale
- LID\_ExfiltrationTrench
- LID\_RunoffRetention
- STMPond

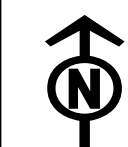
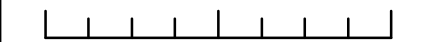
- NVCA Watercourses
- LSRCA Watercourse
- StormSewers

- PondC
- Catchment\_Areas
- <all other values>

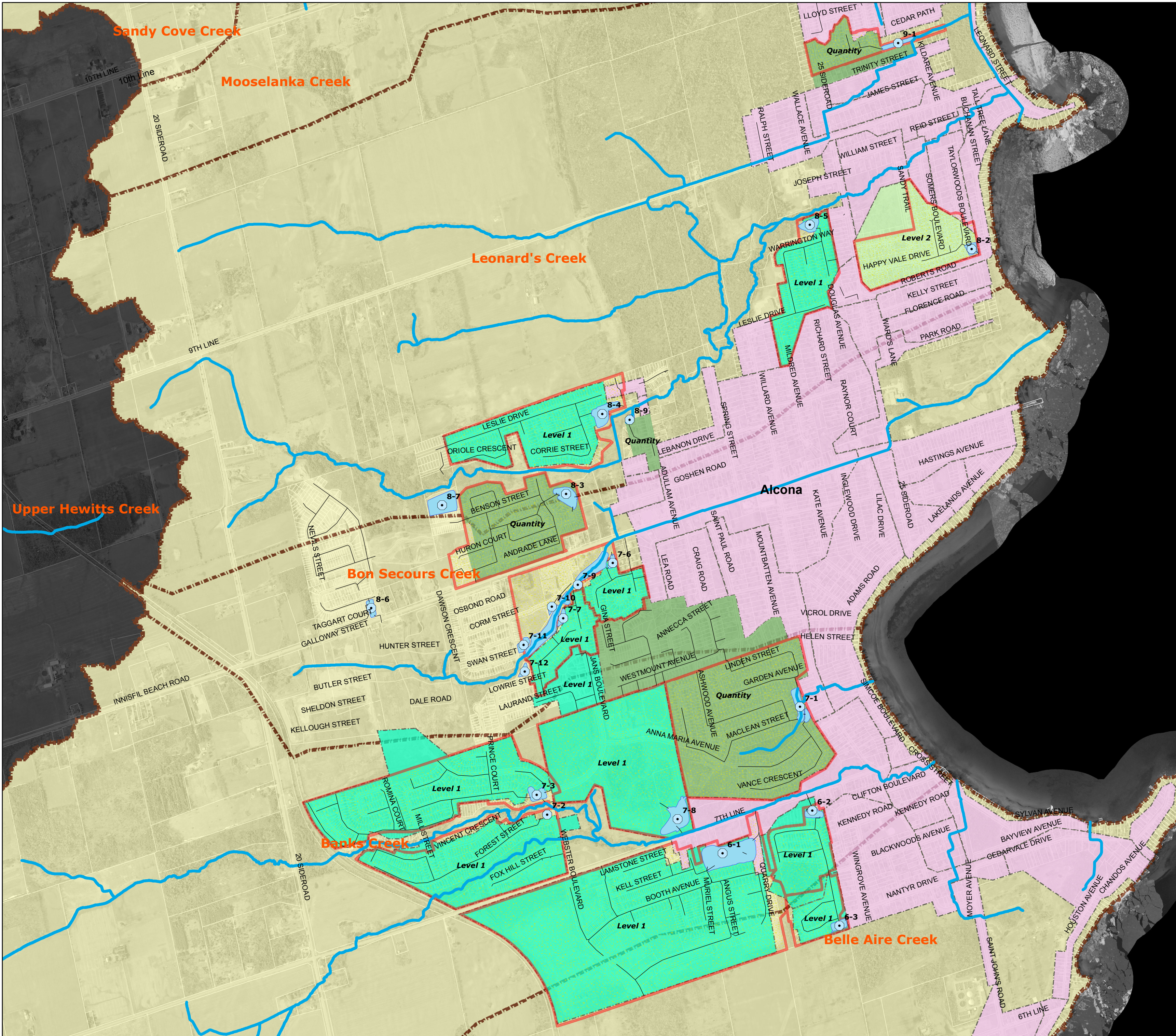
##### CONTROL

- Level 1
- Level 2
- Quantity
- Uncontrolled

0 135 270 540 Meters



SWMU-8



# Banks Creek

## Town of Innisfil Stormwater Management

### SWM Units

#### SWMU-9

Banks Creek

#### Legend

##### MISC.STM\_SWMPond

● <all other values>

##### Subtype

- LID\_BioSwale
- LID\_ExfiltrationTrench
- LID\_RunoffRetention
- STMPond

- NVCA Watercourses
- LSRCA Watercourse
- StormSewers

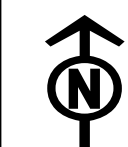
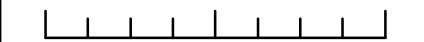
- PondC
- Catchment\_Areas

■ <all other values>

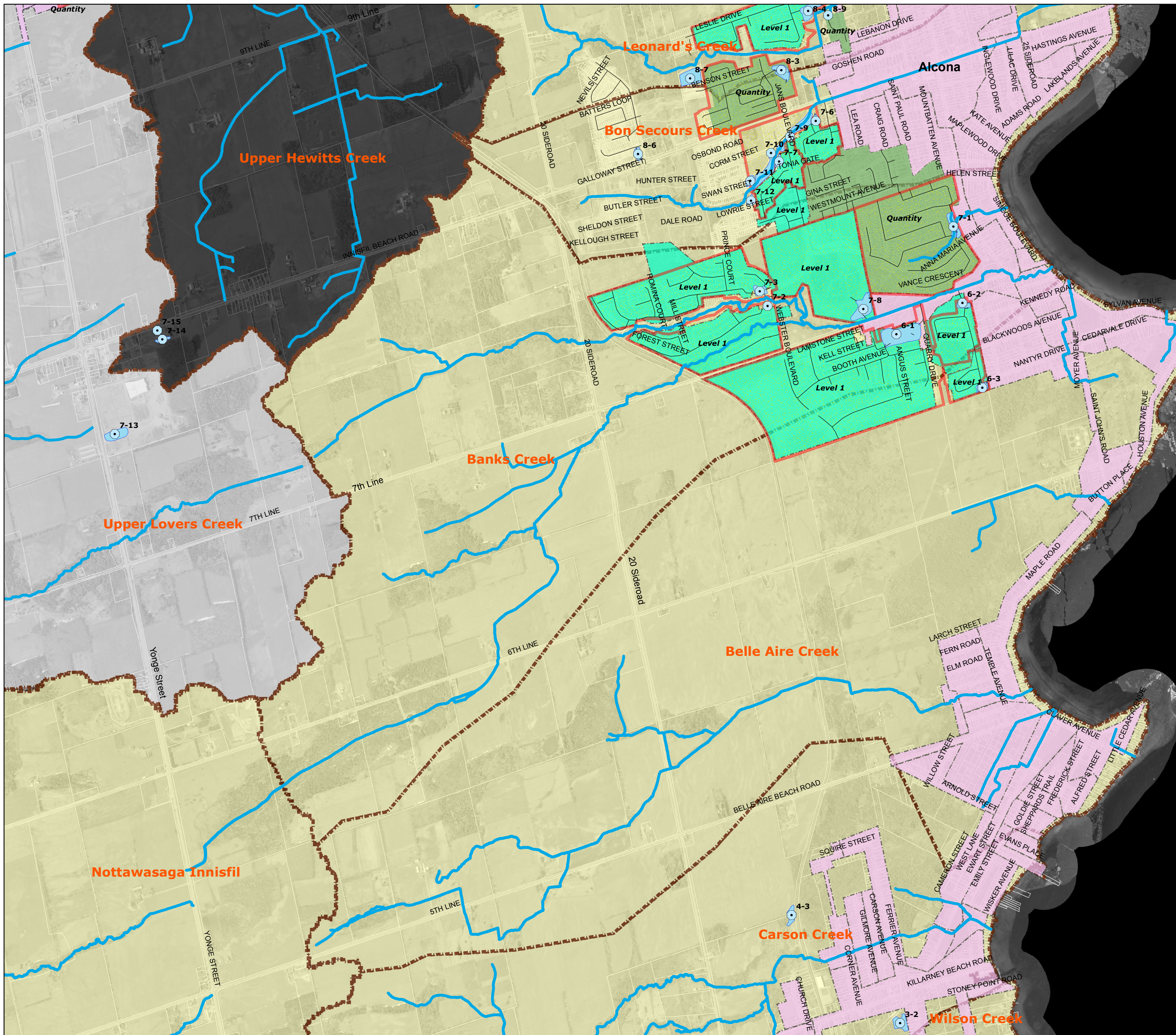
##### CONTROL

- Level 1
- Level 2
- Quantity
- Uncontrolled

0 180 360 720 Meters



SWMU-9





# Carson Creek

## Town of Innisfil Stormwater Management

### SWM Units

#### SWMU-10

Carson Creek

#### Legend

##### MISC.STM\_SWMPond

- <all other values>

##### Subtype

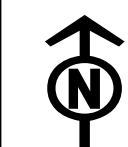
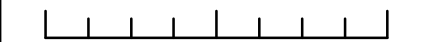
- LID\_BioSwale
- LID\_ExfiltrationTrench
- LID\_RunoffRetention
- STMPond

- NVCA Watercourses
- LSRCA Watercourse
- StormSewers
- PondC
- Catchment\_Areas
- <all other values>

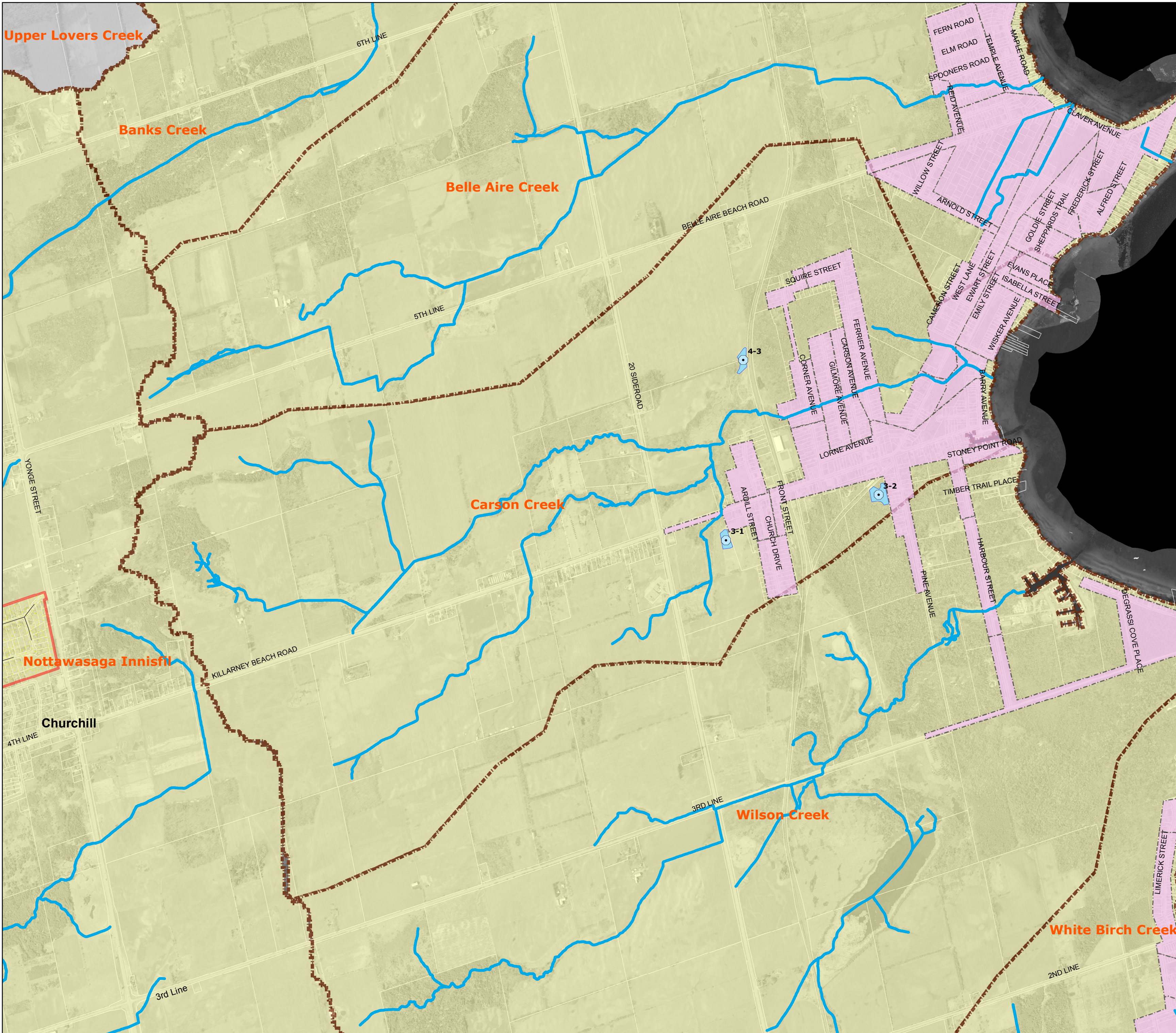
##### CONTROL

- Level 1
- Level 2
- Quantity
- Uncontrolled

0 145 290 580 Meters



SWMU-10



# Wilson Creek

## Town of Innisfil Stormwater Management

### SWM Units

### SWMU-11

Wilson Creek

#### Legend

##### MISC.STM\_SWMPond

● <all other values>

##### Subtype

- LID\_BioSwale
- LID\_ExfiltrationTrench
- LID\_RunoffRetention
- STMPond

— NVCA Watercourses

— LSRCA Watercourse

— StormSewers

■ PondC

■ Catchment\_Areas

■ <all other values>

##### CONTROL

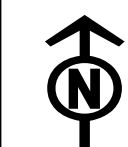
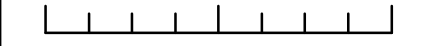
■ Level 1

■ Level 2

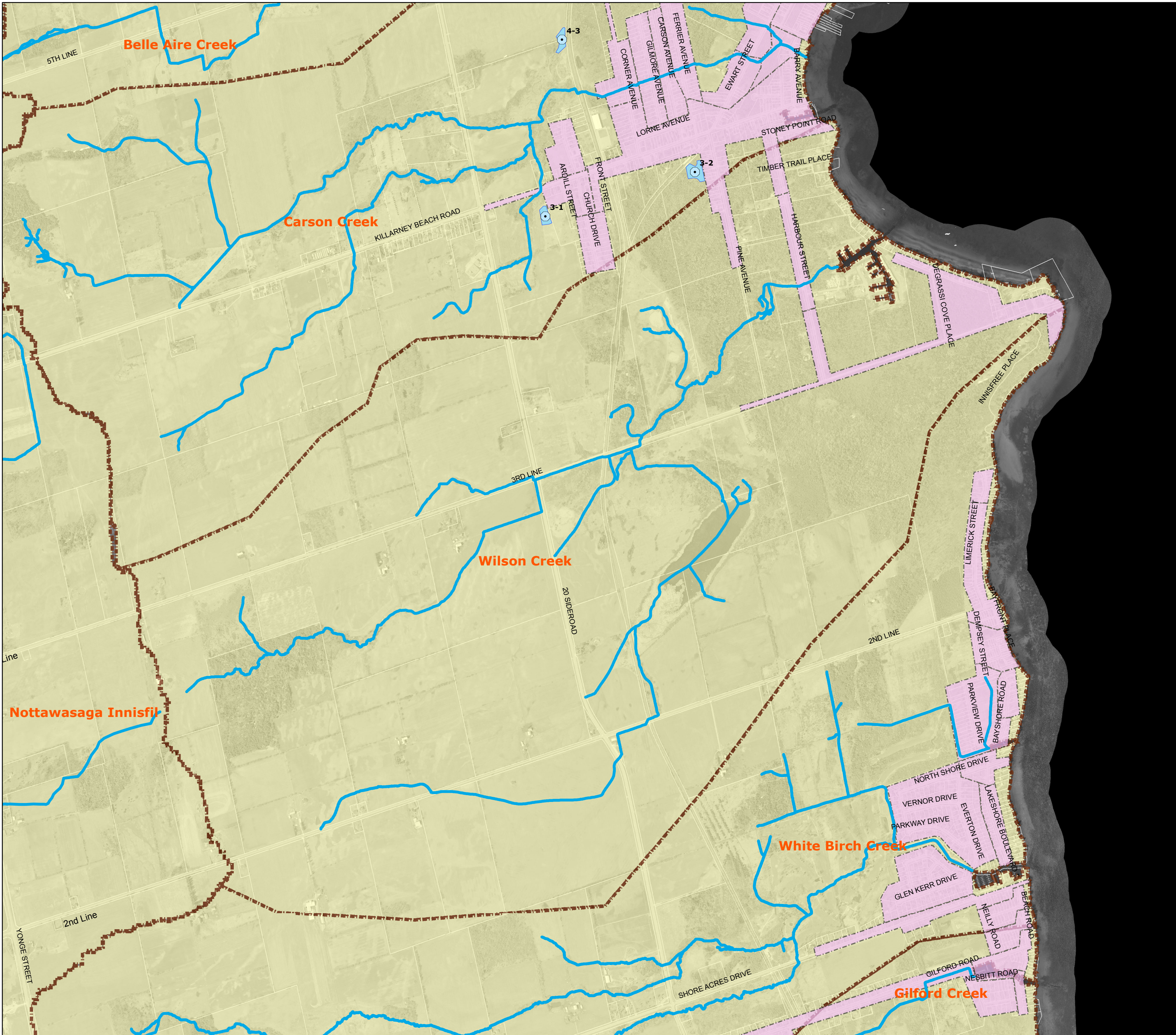
■ Quantity

■ Uncontrolled

0 150 300 600 Meters



SWMU-11



# White Birch Creek

## Town of Innisfil Stormwater Management

### SWM Units

#### SWMU-12

White Birch Creek

#### Legend

##### MISC.STM\_SWMPond

● <all other values>

##### Subtype

- LID\_BioSwale
- LID\_ExfiltrationTrench
- LID\_RunoffRetention
- STMPond

— NVCA Watercourses

— LSRCA Watercourse

— StormSewers

■ PondC

■ Catchment\_Areas

■ <all other values>

##### CONTROL

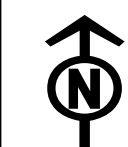
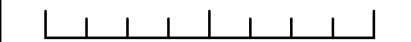
■ Level 1

■ Level 2

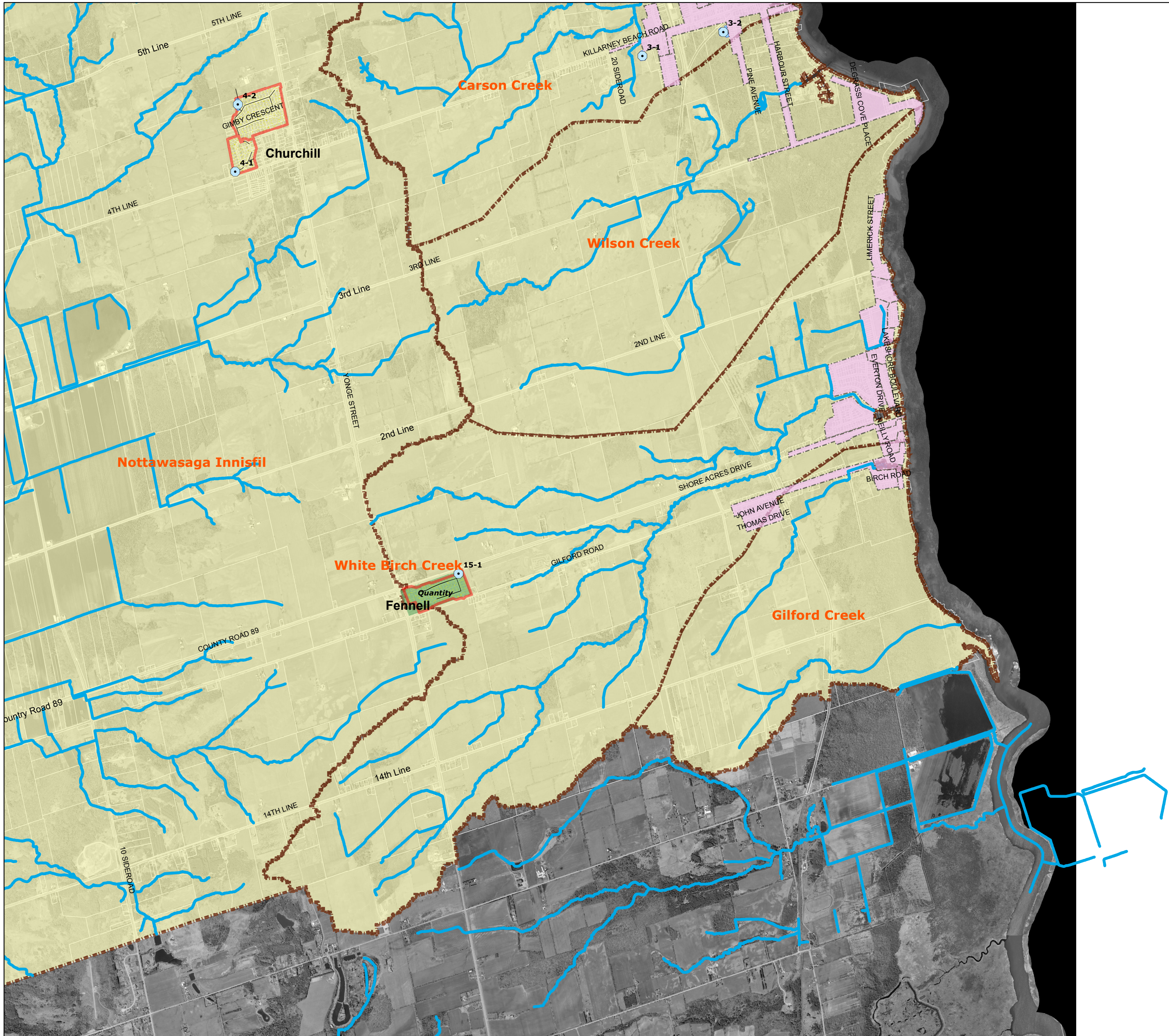
■ Quantity

■ Uncontrolled

0 262.5525 1,050 Meters



SWMU-12



# Upper Hewitts Creek

## Town of Innisfil Stormwater Management

### SWM Units

#### SWMU-1

Upper Hewitts Creek

#### Legend

##### MISC.STM\_SWMPond

● <all other values>

##### Subtype

- LID\_BioSwale
- LID\_ExfiltrationTrench
- LID\_RunoffRetention
- STMPond

— NVCA Watercourses

— LSRCA Watercourse

— StormSewers

■ PondC

■ Catchment\_Areas

■ <all other values>

##### CONTROL

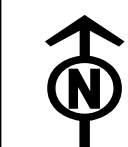
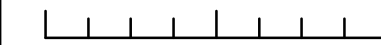
■ Level 1

■ Level 2

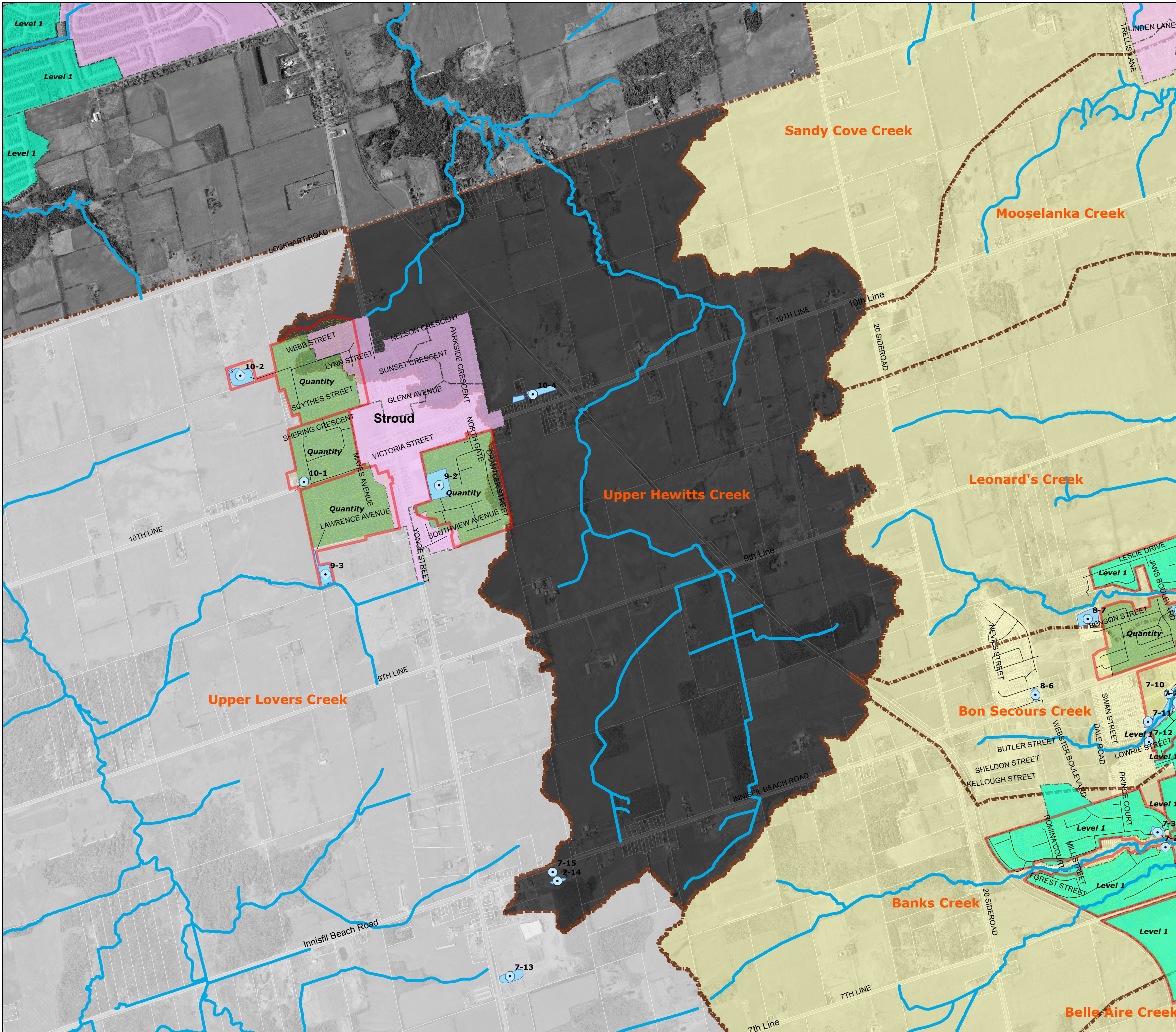
■ Quantity

■ Uncontrolled

0 180 360 720 Meters



SWMU-1



# Leonard's Creek

## Town of Innisfil Stormwater Management

### SWM Units

### SWMU-13

Leonard's Creek

#### Legend

##### MISC.STM\_SWMPond

● <all other values>

##### Subtype

- LID\_BioSwale
- LID\_ExfiltrationTrench
- LID\_RunoffRetention
- STMPond

— NVCA Watercourses

— LSRCA Watercourse

— StormSewers

■ PondC

■ Catchment\_Areas

■ <all other values>

##### CONTROL

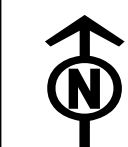
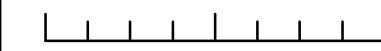
■ Level 1

■ Level 2

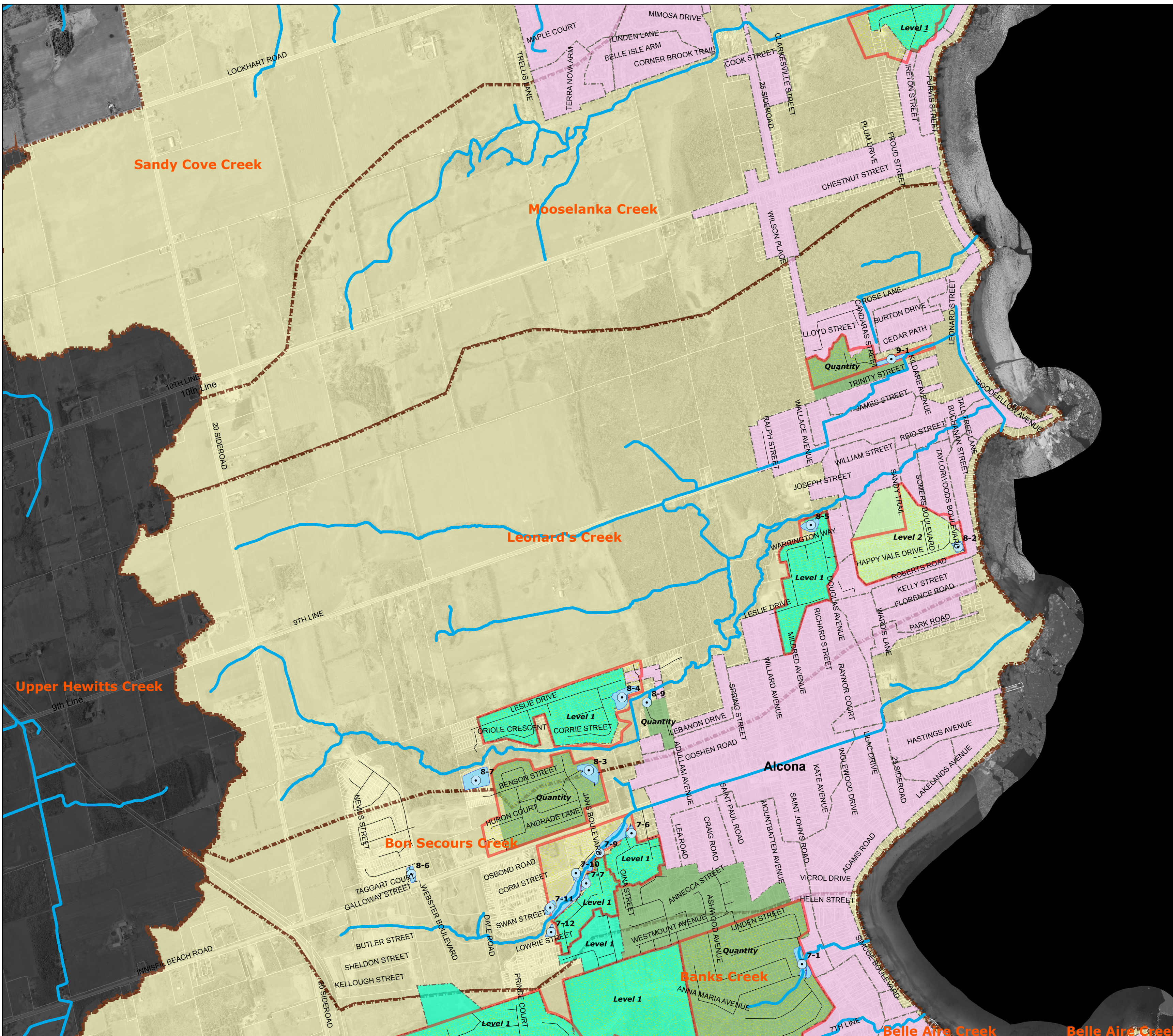
■ Quantity

■ Uncontrolled

0 145 290 580 Meters



SWMU-13



# Belle Aire Creek

## Town of Innisfil Stormwater Management

### SWM Units

### SWMU-14

Belle Aire Creek

#### Legend

##### MISC.STM\_SWMPond

• <all other values>

##### Subtype

- LID\_BioSwale
- LID\_ExfiltrationTrench
- LID\_RunoffRetention
- STMPond

— NVCA Watercourses

— LSRCA Watercourse

— StormSewers

■ PondC

■ Catchment\_Areas

■ <all other values>

##### CONTROL

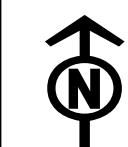
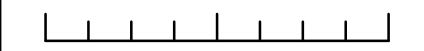
■ Level 1

■ Level 2

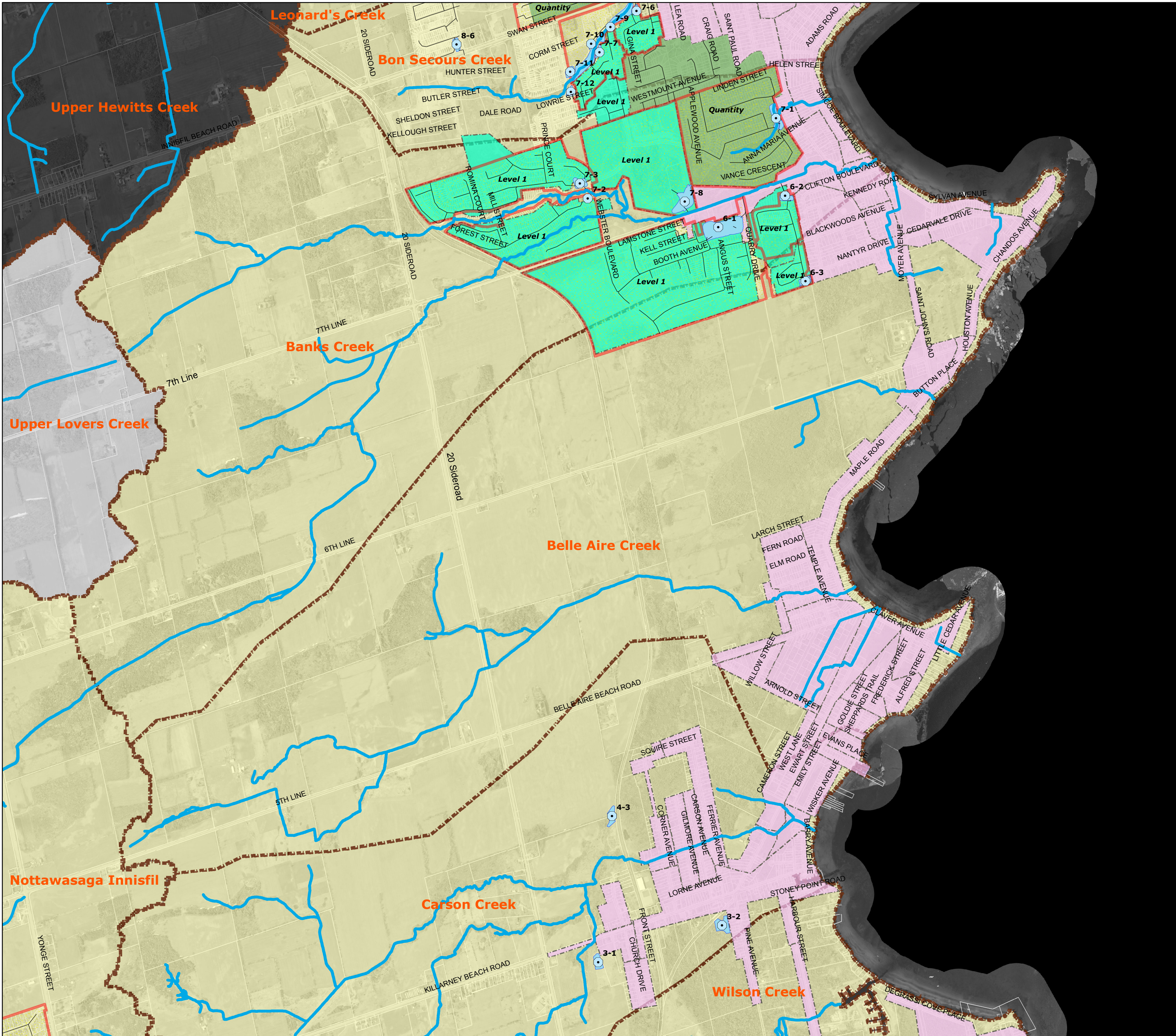
■ Quantity

■ Uncontrolled

0 180 360 720 Meters



SWMU-14



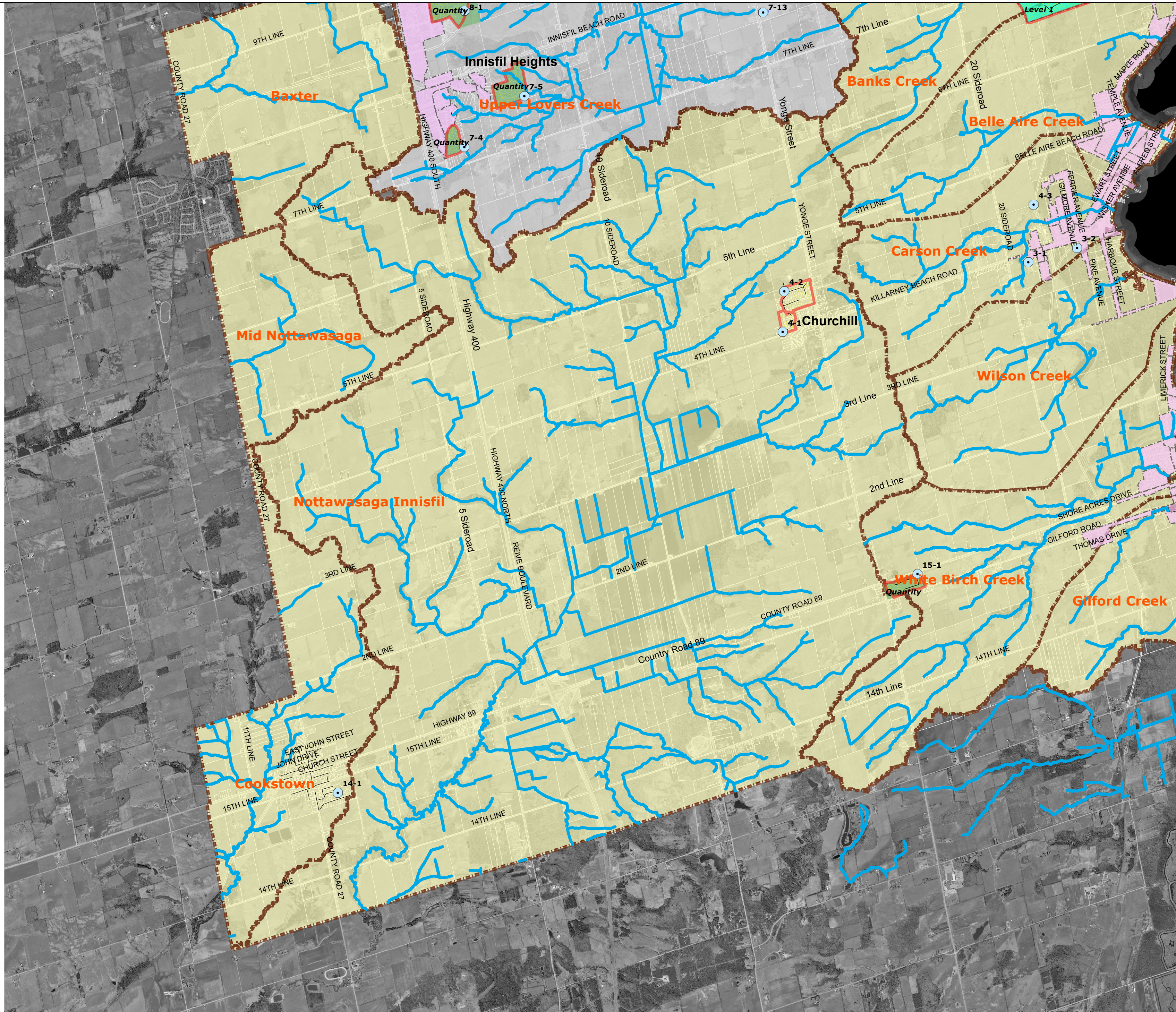
# Nottawasaga Innisfil

## Town of Innisfil Stormwater Management

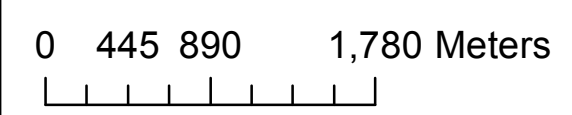
### SWM Units

#### SWMU-15

Nottawasaga Innisfil



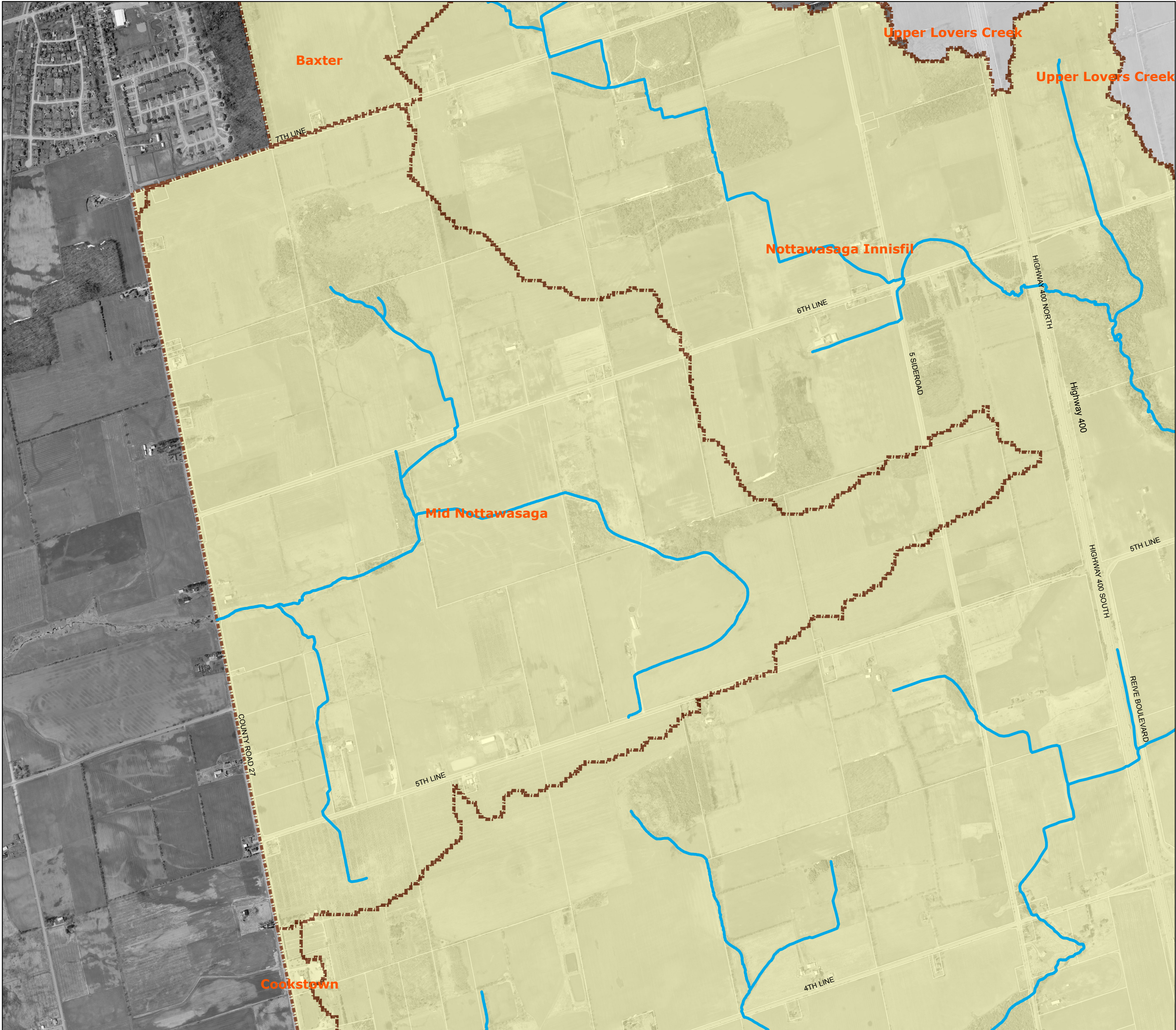
- Legend**
- MISC.STM\_SWMPond**
    - <all other values>
  - Subtype**
    - LID\_BioSwale
    - LID\_ExfiltrationTrench
    - LID\_RunoffRetention
    - STMPond
  - Watercourses**
    - NVCA Watercourses
    - LSRCA Watercourse
    - StormSewers
  - PondC**
  - Catchment\_Areas**
  - CONTROL**
    - Level 1
    - Level 2
    - Quantity
    - Uncontrolled



North arrow pointing up.

**SWMU-15**

# Mid Nottawasaga



## Town of Innisfil Stormwater Management

### SWM Units

#### SWMU-16

Mid Nottawasaga

#### Legend

MISC.STM\_SWMPond

● <all other values>

#### Subtype

- LID\_BioSwale
- LID\_ExfiltrationTrench
- LID\_RunoffRetention
- STMPond

— NVCA Watercourses

— LSRCA Watercourse

— StormSewers

■ PondC

■ Catchment\_Areas

■ <all other values>

#### CONTROL

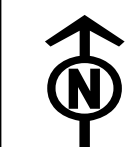
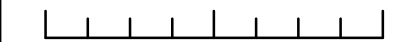
■ Level 1

■ Level 2

■ Quantity

■ Uncontrolled

0 120 240 480 Meters



SWMU-16



# Cookstown

## Town of Innisfil Stormwater Management

### SWM Units

#### SWMU-17

Cookstown

#### Legend

##### MISC.STM\_SWMPond

● <all other values>

##### Subtype

- LID\_BioSwale
- LID\_ExfiltrationTrench
- LID\_RunoffRetention
- STMPond

— NVCA Watercourses

— LSRCA Watercourse

— StormSewers

■ PondC

■ Catchment\_Areas

■ <all other values>

##### CONTROL

■ Level 1

■ Level 2

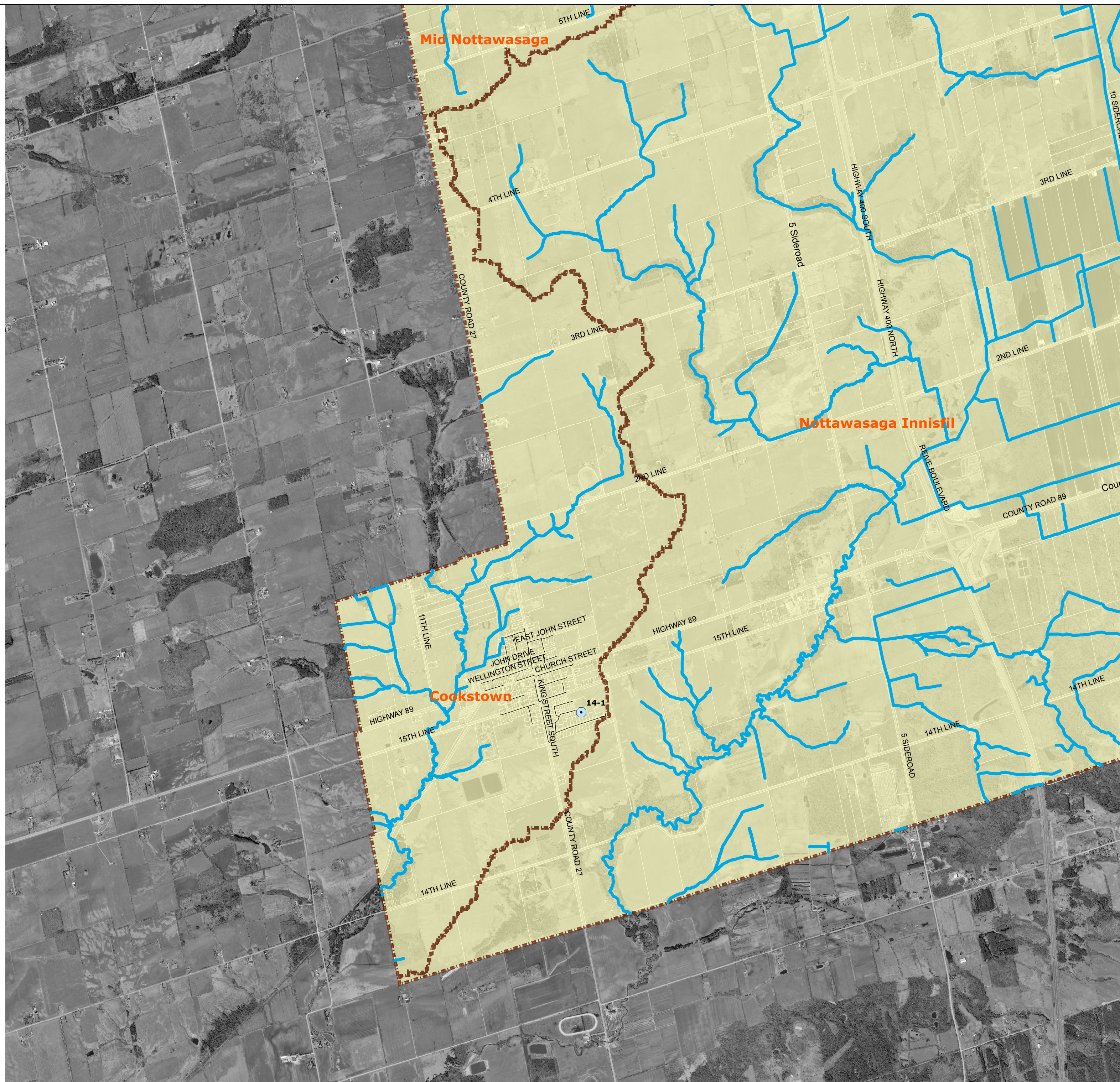
■ Quantity

■ Uncontrolled

0 262.5525 1,050 Meters



SWMU-17



# Baxter

## Town of Innisfil Stormwater Management

### SWM Units

### SWMU-18

Baxter

#### Legend

##### MISC.STM\_SWMPond

● <all other values>

##### Subtype

- LID\_BioSwale
- LID\_ExfiltrationTrench
- LID\_RunoffRetention
- STMPond

— NVCA Watercourses

— LSRCA Watercourse

— StormSewers

■ PondC

■ Catchment\_Areas

■ <all other values>

##### CONTROL

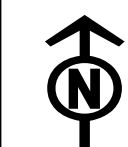
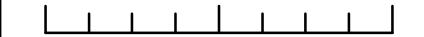
■ Level 1

■ Level 2

■ Quantity

■ Uncontrolled

0 165 330 660 Meters



SWMU-18

