

Town of Innisfil Stormwater Management Facilities

Stormwater Management 10-1 BRANDY LANE



Legend

MISC.STM_SWMPond

● <all other values>

Subtype

- LID_BioSwale
- LID_ExfiltrationTrench
- LID_RunoffRetention
- STMPond

MISC.STM_Manhole

● <all other values>

Subtype

- CatchBasinMH
- △ DitchInletMH
- Manhole
- MHChamber

MISC.STM_CatchBasin

● <all other values>

Subtype

- CatchBasin
- DitchInlet
- DoubleCatchBasin
- OtherInlet
- SideEntryCB
- Watercourses (NVCA)
- Watercourse (LSCRA)
- Municipal_Drain
- Storm Sewers
- Catch Basin Leads
- maj_inlet
- min_inlet
- SWMF outlet
- SWMF Pond FlowPath

Rip_Rap

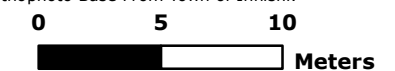
SWMF Forebay

Type

- ▨ Dry Forebay
- ▨ Wet Forebay
- ▨ SWMF Permpool
- ▨ PondBTM
- ▨ PondCrest
- RoadNetwork
- ▭ Assessment Parcel

Map is based on NAD83 UTM Zone 17N CRS1983 Adjusted.

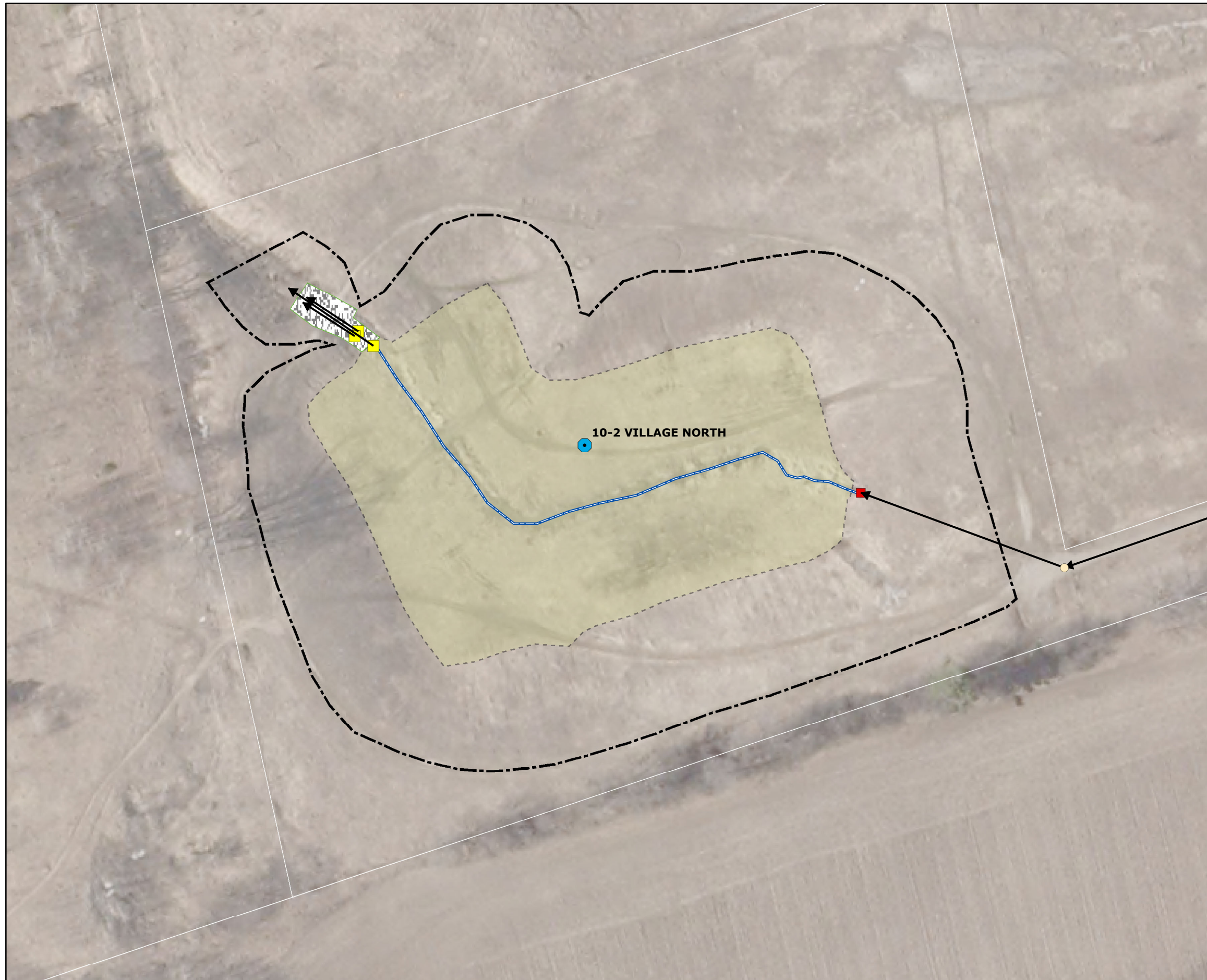
Orthophoto Base From Town of Innisfil.



SWM Facility 10-1

Town of Innisfil Stormwater Management Facilities

Stormwater Management 10-2 VILLAGE NORTH



Legend

MISC.STM_SWMPond

● <all other values>

Subtype

- LID_BioSwale
- LID_ExfiltrationTrench
- LID_RunoffRetention
- STMPond

MISC.STM_Manhole

● <all other values>

Subtype

- CatchBasinMH
- △ DitchInletMH
- Manhole
- MHChamber

MISC.STM_CatchBasin

● <all other values>

Subtype

- CatchBasin
- DitchInlet
- DoubleCatchBasin
- OtherInlet
- SideEntryCB
- Watercourses (NVCA)
- Watercourse (LSCRA)
- Municipal_Drain
- Storm Sewers
- Catch Basin Leads
- maj_inlet
- min_inlet
- SWMF outlet
- SWMF Pond FlowPath

□ Rip_Rap

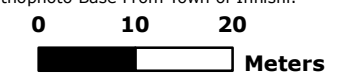
SWMF Forebay

Type

- ▨ Dry Forebay
- ▨ Wet Forebay
- SWMF Permpool
- PondBTM
- PondCrest
- RoadNetwork
- Assessment Parcel

Map is based on NAD83 UTM Zone 17N CRS1983 Adjusted.

Orthophoto Base From Town of Innisfil.



SWM Facility 10-2

Town of Innisfil Stormwater Management Facilities

Stormwater Management 10-3 MCKEE POND



Legend

MISC.STM_SWMPond

● <all other values>

Subtype

- LID_BioSwale
- LID_ExfiltrationTrench
- LID_RunoffRetention
- STMPond

MISC.STM_Manhole

● <all other values>

Subtype

- CatchBasinMH
- △ DitchInletMH
- Manhole
- MHChamber

MISC.STM_CatchBasin

● <all other values>

Subtype

- CatchBasin
- DitchInlet
- DoubleCatchBasin
- OtherInlet
- SideEntryCB
- Watercourses (NVCA)
- Watercourse (LSCRA)
- Municipal_Drain
- Storm Sewers
- Catch Basin Leads
- maj_inlet
- min_inlet
- SWMF outlet
- SWMF Pond FlowPath

Rip_Rap

SWMF Forebay

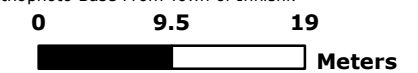
Type

- ▨ Dry Forebay
- ▨ Wet Forebay
- SWMF Permpool
- PondBTM
- PondCrest

- RoadNetwork
- Assessment Parcel

Map is based on NAD83 UTM Zone 17N CRS1983 Adjusted.

Orthophoto Base From Town of Innisfil.



SWM Facility 10-3

Town of Innisfil Stormwater Management Facilities

Stormwater Management 10-4 INNISFIL EXECUTIVE ESTATES



Legend

MISC.STM_SWMPond

● <all other values>

Subtype

- LID_BioSwale
- LID_ExfiltrationTrench
- LID_RunoffRetention
- STMPond

MISC.STM_Manhole

● <all other values>

Subtype

- CatchBasinMH
- △ DitchInletMH
- Manhole
- MHChamber

MISC.STM_CatchBasin

● <all other values>

Subtype

- CatchBasin
- DitchInlet
- DoubleCatchBasin
- OtherInlet
- SideEntryCB
- Watercourses (NVCA)
- Watercourse (LSCRA)
- Municipal_Drain
- Storm Sewers
- Catch Basin Leads
- maj_inlet
- min_inlet
- SWMF outlet
- SWMF Pond FlowPath

Rip_Rap

SWMF Forebay

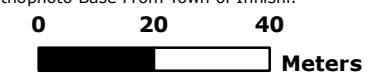
Type

- ▨ Dry Forebay
- ▨ Wet Forebay
- SWMF Permpool
- PondBTM
- PondCrest

- RoadNetwork
- Assessment Parcel

Map is based on NAD83 UTM Zone 17N CRS1983 Adjusted.

Orthophoto Base From Town of Innisfil.



SWM Facility 10-4

Town of Innisfil Stormwater Management Facilities

Stormwater Management 13-1 MONREPOS



Legend

MISC.STM_SWMPond

● <all other values>

Subtype

- LID_BioSwale
- LID_ExfiltrationTrench
- LID_RunoffRetention
- STMPond

MISC.STM_Manhole

● <all other values>

Subtype

- CatchBasinMH
- △ DitchInletMH
- Manhole
- MHChamber

MISC.STM_CatchBasin

● <all other values>

Subtype

- CatchBasin
- DitchInlet
- DoubleCatchBasin
- OtherInlet
- SideEntryCB
- Watercourses (NVCA)
- Watercourse (LSCRA)
- Municipal_Drain
- Storm Sewers
- Catch Basin Leads
- maj_inlet
- min_inlet
- SWMF outlet
- SWMF Pond FlowPath

□ Rip_Rap

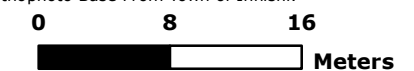
SWMF Forebay

Type

- ▨ Dry Forebay
- ▨ Wet Forebay
- SWMF Permpool
- PondBTM
- PondCrest
- RoadNetwork
- Assessment Parcel

Map is based on NAD83 UTM Zone 17N CRS1983 Adjusted.

Orthophoto Base From Town of Innisfil.



SWM Facility 13-1

Town of Innisfil Stormwater Management Facilities

Stormwater Management 13-2 MONREPOS



Legend

MISC.STM_SWMPond

● <all other values>

Subtype

- LID_BioSwale
- LID_ExfiltrationTrench
- LID_RunoffRetention
- STMPond

MISC.STM_Manhole

● <all other values>

Subtype

- CatchBasinMH
- △ DitchInletMH
- Manhole
- MHCamber

MISC.STM_CatchBasin

● <all other values>

Subtype

- CatchBasin
- DitchInlet
- DoubleCatchBasin
- OtherInlet
- SideEntryCB
- Watercourses (NVCA)
- Watercourse (LSCRA)
- Municipal_Drain
- Storm Sewers
- Catch Basin Leads
- maj_inlet
- min_inlet
- SWMF outlet

— SWMF Pond FlowPath

□ Rip_Rap

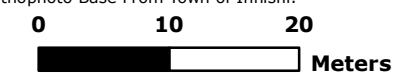
SWMF Forebay

Type

- ▨ Dry Forebay
- ▨ Wet Forebay
- SWMF Permpool
- PondBTM
- PondCrest
- RoadNetwork
- Assessment Parcel

Map is based on NAD83 UTM Zone 17N CRS1983 Adjusted.

Orthophoto Base From Town of Innisfil.



SWM Facility 13-2

Town of Innisfil Stormwater Management Facilities

Stormwater Management 13-3 SOUTH SHORE WOODS



Legend

MISC.STM_SWMPond

● <all other values>

Subtype

- LID_BioSwale
- LID_ExfiltrationTrench
- LID_RunoffRetention
- STMPond

MISC.STM_Manhole

● <all other values>

Subtype

- CatchBasinMH
- △ DitchInletMH
- Manhole
- MHChamber

MISC.STM_CatchBasin

● <all other values>

Subtype

- CatchBasin
- DitchInlet
- DoubleCatchBasin
- OtherInlet
- SideEntryCB
- Watercourses (NVCA)
- Watercourse (LSCRA)
- Municipal_Drain
- Storm Sewers
- Catch Basin Leads
- maj_inlet
- min_inlet
- SWMF outlet
- SWMF Pond FlowPath
- Rip_Rap

SWMF Forebay

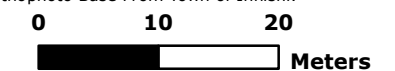
Type

- ▨ Dry Forebay
- ▨ Wet Forebay
- SWMF Permpool
- PondBTM
- PondCrest

- RoadNetwork
- Assessment Parcel

Map is based on NAD83 UTM Zone 17N CRS1983 Adjusted.

Orthophoto Base From Town of Innisfil.



SWM Facility 13-3

Town of Innisfil Stormwater Management Facilities

Stormwater Management 14-1 Belpark



Legend

MISC.STM_SWMPond

● <all other values>

Subtype

- LID_BioSwale
- LID_ExfiltrationTrench
- LID_RunoffRetention
- STMPond

MISC.STM_Manhole

● <all other values>

Subtype

- CatchBasinMH
- △ DitchInletMH
- Manhole
- MHChamber

MISC.STM_CatchBasin

● <all other values>

Subtype

- CatchBasin
- DitchInlet
- DoubleCatchBasin
- OtherInlet
- SideEntryCB
- Watercourses (NVCA)
- Watercourse (LSCRA)
- Municipal_Drain
- Storm Sewers
- Catch Basin Leads
- maj_inlet
- min_inlet
- SWMF outlet
- SWMF Pond FlowPath

Rip_Rap

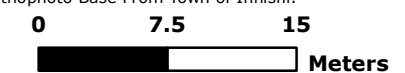
SWMF Forebay

Type

- ▨ Dry Forebay
- ▨ Wet Forebay
- SWMF Permpool
- PondBTM
- PondCrest
- RoadNetwork
- Assessment Parcel

Map is based on NAD83 UTM Zone 17N CRS1983 Adjusted.

Orthophoto Base From Town of Innisfil.



SWM Facility 14-1

Town of Innisfil Stormwater Management Facilities

Stormwater Management 15-1 GOLDCREST



Legend

MISC.STM_SWMPond

● <all other values>

Subtype

- LID_BioSwale
- LID_ExfiltrationTrench
- LID_RunoffRetention
- STMPond

MISC.STM_Manhole

● <all other values>

Subtype

- CatchBasinMH
- △ DitchInletMH
- Manhole
- MHChamber

MISC.STM_CatchBasin

● <all other values>

Subtype

- CatchBasin
- DitchInlet
- DoubleCatchBasin
- OtherInlet
- SideEntryCB
- Watercourses (NVCA)
- Watercourse (LSCRA)
- Municipal_Drain
- Storm Sewers
- Catch Basin Leads
- maj_inlet
- min_inlet

■ SWMF outlet

— SWMF Pond FlowPath

□ Rip_Rap

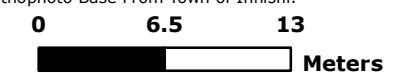
SWMF Forebay

Type

- ▨ Dry Forebay
- ▨ Wet Forebay
- ▨ SWMF Permpool
- ▨ PondBTM
- ▨ PondCrest
- RoadNetwork
- Assessment Parcel

Map is based on NAD83 UTM Zone 17N CRS1983 Adjusted.

Orthophoto Base From Town of Innisfil.



SWM Facility 15-1

Town of Innisfil Stormwater Management Facilities

Stormwater Management 3-1 LSAMI P4 Pond1



Legend

MISC.STM_SWMPond

● <all other values>

Subtype

- LID_BioSwale
- LID_ExfiltrationTrench
- LID_RunoffRetention
- STMPond

MISC.STM_Manhole

● <all other values>

Subtype

- CatchBasinMH
- △ DitchInletMH
- Manhole
- MHChamber

MISC.STM_CatchBasin

● <all other values>

Subtype

- CatchBasin
- DitchInlet
- DoubleCatchBasin
- OtherInlet
- SideEntryCB
- Watercourses (NVCA)
- Watercourse (LSCRA)
- Municipal_Drain
- Storm Sewers
- Catch Basin Leads
- maj_inlet
- min_inlet
- SWMF outlet
- SWMF Pond FlowPath

Rip_Rap

SWMF Forebay

Type

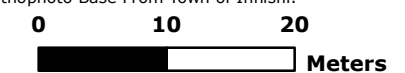
- ▨ Dry Forebay
- ▨ Wet Forebay
- SWMF Permpool
- PondBTM
- PondCrest

RoadNetwork

Assessment Parcel

Map is based on NAD83 UTM Zone 17N CRS1983 Adjusted.

Orthophoto Base From Town of Innisfil.



SWM Facility 3-1

Town of Innisfil Stormwater Management Facilities

Stormwater Management 3-2 LSAMI P3



Legend

MISC.STM_SWMPond

● <all other values>

Subtype

- LID_BioSwale
- LID_ExfiltrationTrench
- LID_RunoffRetention
- STMPond

MISC.STM_Manhole

● <all other values>

Subtype

- CatchBasinMH
- △ DitchInletMH
- Manhole
- MHChamber

MISC.STM_CatchBasin

● <all other values>

Subtype

- CatchBasin
- DitchInlet
- DoubleCatchBasin
- OtherInlet
- SideEntryCB
- Watercourses (NVCA)
- Watercourse (LSCRA)
- Municipal_Drain
- Storm Sewers
- Catch Basin Leads
- maj_inlet
- min_inlet
- SWMF outlet
- SWMF Pond FlowPath

Rip_Rap

SWMF Forebay

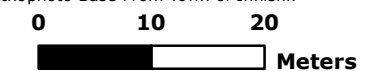
Type

- ▨ Dry Forebay
- ▨ Wet Forebay
- SWMF Permpool
- PondBTM
- PondCrest

- RoadNetwork
- Assessment Parcel

Map is based on NAD83 UTM Zone 17N CRS1983 Adjusted.

Orthophoto Base From Town of Innisfil.



SWM Facility 3-2

Town of Innisfil Stormwater Management Facilities

Stormwater Management 4-1 VALLEYVIEW



Legend

MISC.STM_SWMPond

● <all other values>

Subtype

- LID_BioSwale
- LID_ExfiltrationTrench
- LID_RunoffRetention
- STMPond

MISC.STM_Manhole

● <all other values>

Subtype

- CatchBasinMH
- △ DitchInletMH
- Manhole
- MHChamber

MISC.STM_CatchBasin

● <all other values>

Subtype

- CatchBasin
- DitchInlet
- DoubleCatchBasin
- OtherInlet
- SideEntryCB
- Watercourses (NVCA)
- Watercourse (LSCRA)
- - Municipal_Drain
- Storm Sewers
- Catch Basin Leads
- maj_inlet
- min_inlet
- SWMF outlet
- SWMF Pond FlowPath

□ Rip_Rap

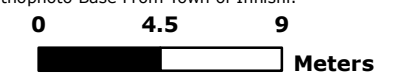
SWMF Forebay

Type

- ▨ Dry Forebay
- ▨ Wet Forebay
- SWMF Permpool
- PondBTM
- PondCrest
- RoadNetwork
- Assessment Parcel

Map is based on NAD83 UTM Zone 17N CRS1983 Adjusted.

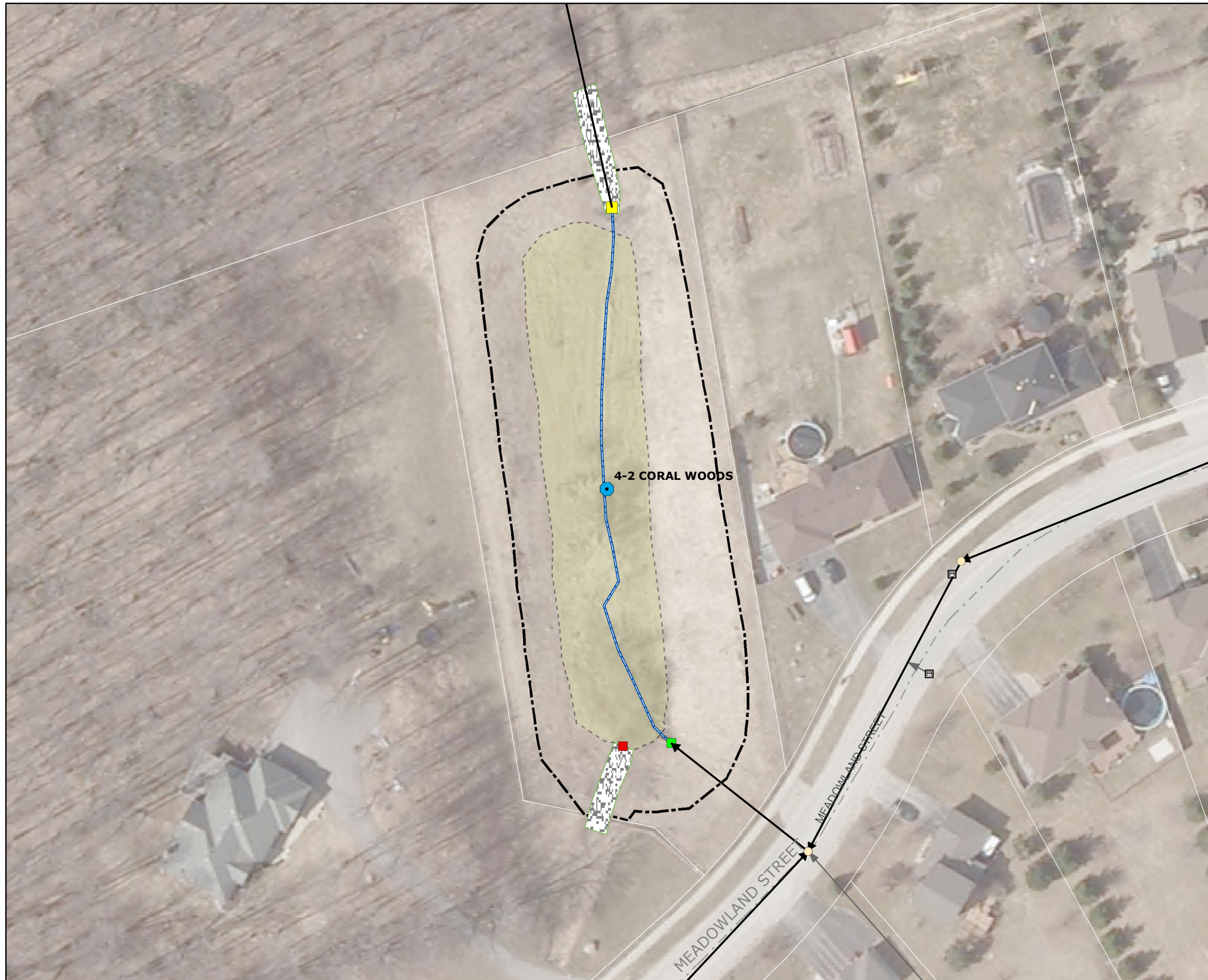
Orthophoto Base From Town of Innisfil.



SWM Facility 4-1

Town of Innisfil Stormwater Management Facilities

Stormwater Management 4-2 CORAL WOODS



Legend

MISC.STM_SWMPond

● <all other values>

Subtype

- LID_BioSwale
- LID_ExfiltrationTrench
- LID_RunoffRetention
- STMPond

MISC.STM_Manhole

● <all other values>

Subtype

- CatchBasinMH
- △ DitchInletMH
- Manhole
- MHChamber

MISC.STM_CatchBasin

● <all other values>

Subtype

- CatchBasin
- DitchInlet
- DoubleCatchBasin
- OtherInlet
- SideEntryCB
- Watercourse (NVCA)
- Watercourse (LSCRA)
- Municipal_Drain
- Storm Sewers
- Catch Basin Leads
- maj_inlet
- min_inlet
- SWMF outlet
- SWMF Pond FlowPath

□ Rip_Rap

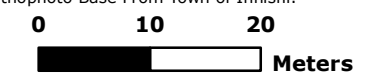
SWMF Forebay

Type

- ▨ Dry Forebay
- ▨ Wet Forebay
- SWMF Permpool
- PondBTM
- PondCrest
- RoadNetwork
- Assessment Parcel

Map is based on NAD83 UTM Zone 17N CRS1983 Adjusted.

Orthophoto Base From Town of Innisfil.



SWM Facility 4-2

Town of Innisfil Stormwater Management Facilities

Stormwater Management 4-3 LSAMI P1 BELLAIRE



Legend

MISC.STM_SWMPond

● <all other values>

Subtype

- LID_BioSwale
- LID_ExfiltrationTrench
- LID_RunoffRetention
- STMPond

MISC.STM_Manhole

● <all other values>

Subtype

- CatchBasinMH
- △ DitchInletMH
- Manhole
- MHChamber

MISC.STM_CatchBasin

● <all other values>

Subtype

- CatchBasin
- DitchInlet
- DoubleCatchBasin
- OtherInlet
- SideEntryCB
- Watercourses (NVCA)
- Watercourse (LSCRA)
- Municipal_Drain
- Storm Sewers
- Catch Basin Leads
- maj_inlet
- min_inlet
- SWMF outlet
- SWMF Pond FlowPath

□ Rip_Rap

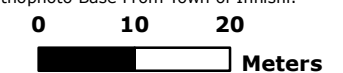
SWMF Forebay

Type

- ▨ Dry Forebay
- ▨ Wet Forebay
- SWMF Permpool
- PondBTM
- PondCrest
- RoadNetwork
- Assessment Parcel

Map is based on NAD83 UTM Zone 17N CRS1983 Adjusted.

Orthophoto Base From Town of Innisfil.



SWM Facility 4-3

Town of Innisfil Stormwater Management Facilities

Stormwater Management 6-1 PREVIN COURT



Legend

MISC.STM_SWMPond

● <all other values>

Subtype

- LID_BioSwale
- LID_ExfiltrationTrench
- LID_RunoffRetention
- STMPond

MISC.STM_Manhole

● <all other values>

Subtype

- CatchBasinMH
- △ DitchInletMH
- Manhole
- MHChamber

MISC.STM_CatchBasin

● <all other values>

Subtype

- CatchBasin
- DitchInlet
- DoubleCatchBasin
- OtherInlet
- SideEntryCB
- Watercourses (NVCA)
- Watercourse (LSCRA)
- Municipal_Drain
- Storm Sewers
- Catch Basin Leads
- maj_inlet
- min_inlet
- SWMF outlet
- SWMF Pond FlowPath
- Rip_Rap

SWMF Forebay

Type

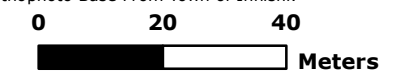
- ▨ Dry Forebay
- ▨ Wet Forebay
- SWMF Permpool
- PondBTM
- PondCrest

— RoadNetwork

□ Assessment Parcel

Map is based on NAD83 UTM Zone 17N CRS1983 Adjusted.

Orthophoto Base From Town of Innisfil.



SWM Facility 6-1

Town of Innisfil Stormwater Management Facilities

Stormwater Management 6-2 TEPCO-NORTH POND



Legend

MISC.STM_SWMPond

● <all other values>

Subtype

- LID_BioSwale
- LID_ExfiltrationTrench
- LID_RunoffRetention
- STMPond

MISC.STM_Manhole

● <all other values>

Subtype

- CatchBasinMH
- △ DitchInletMH
- Manhole
- MHChamber

MISC.STM_CatchBasin

● <all other values>

Subtype

- CatchBasin
- DitchInlet
- DoubleCatchBasin
- OtherInlet
- SideEntryCB
- Watercourses (NVCA)
- Watercourse (LSCRA)
- Municipal_Drain
- Storm Sewers
- Catch Basin Leads
- maj_inlet
- min_inlet
- SWMF outlet

— SWMF Pond FlowPath

□ Rip_Rap

SWMF Forebay

Type

- ▨ Dry Forebay
- ▨ Wet Forebay
- SWMF Permpool
- PondBTM

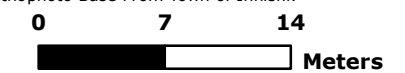
□ PondCrest

— RoadNetwork

— Assessment Parcel

Map is based on NAD83 UTM Zone 17N CRS1983 Adjusted.

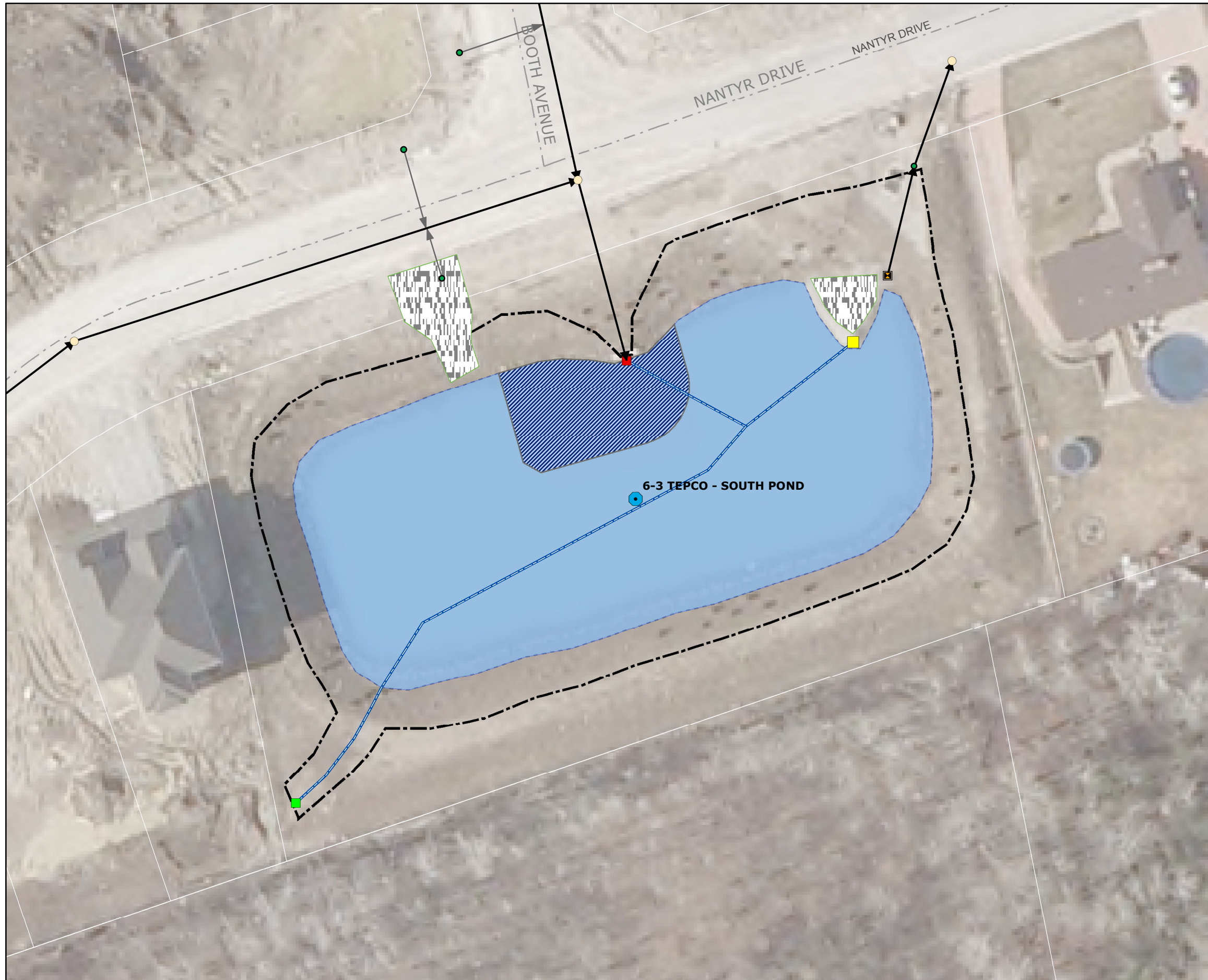
Orthophoto Base From Town of Innisfil.



SWM Facility 6-2

Town of Innisfil Stormwater Management Facilities

Stormwater Management 6-3 TEPCO - SOUTH POND



Legend

MISC.STM_SWMPond

● <all other values>

Subtype

- LID_BioSwale
- LID_ExfiltrationTrench
- LID_RunoffRetention
- STMPond

MISC.STM_Manhole

● <all other values>

Subtype

- CatchBasinMH
- △ DitchInletMH
- Manhole
- MHChamber

MISC.STM_CatchBasin

● <all other values>

Subtype

- CatchBasin
- DitchInlet
- DoubleCatchBasin
- OtherInlet
- SideEntryCB
- Watercourses (NVCA)
- Watercourse (LSCRA)
- - Municipal_Drain
- Storm Sewers
- Catch Basin Leads
- maj_inlet
- min_inlet
- SWMF outlet
- SWMF Pond FlowPath

Rip_Rap

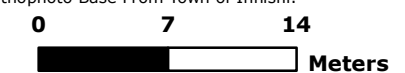
SWMF Forebay

Type

- ▨ Dry Forebay
- ▨ Wet Forebay
- SWMF Permpool
- ▨ PondBTM
- ▨ PondCrest
- RoadNetwork
- Assessment Parcel

Map is based on NAD83 UTM Zone 17N CRS1983 Adjusted.

Orthophoto Base From Town of Innisfil.



SWM Facility 6-3



Town of Innisfil Stormwater Management Facilities

Stormwater Management 7-1 ROYAL ALCONA ESTATES

Legend

MISC.STM_SWMPond

● <all other values>

Subtype

- LID_BioSwale
- LID_ExfiltrationTrench
- LID_RunoffRetention
- STMPond

MISC.STM_Manhole

● <all other values>

Subtype

- CatchBasinMH
- △ DitchInletMH
- Manhole
- MHChamber

MISC.STM_CatchBasin

● <all other values>

Subtype

- CatchBasin
- DitchInlet
- DoubleCatchBasin
- OtherInlet
- SideEntryCB
- Watercourses (NVCA)
- Watercourse (LSCRA)
- Municipal_Drain
- Storm Sewers
- Catch Basin Leads
- maj_inlet
- min_inlet
- SWMF outlet
- SWMF Pond FlowPath

Rip_Rap

SWMF Forebay

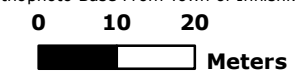
Type

- ▨ Dry Forebay
- ▨ Wet Forebay
- ▨ SWMF Permpool
- ▨ PondBTM
- ▨ PondCrest

- RoadNetwork
- Assessment Parcel

Map is based on NAD83 UTM Zone 17N CRS1983 Adjusted.

Orthophoto Base From Town of Innisfil.



SWM Facility 7-1

Town of Innisfil Stormwater Management Facilities

Stormwater Management 7-10 GREEN ACRES POND#2



Legend

MISC.STM_SWMPond

● <all other values>

Subtype

- LID_BioSwale
- LID_ExfiltrationTrench
- LID_RunoffRetention
- STMPond

MISC.STM_Manhole

● <all other values>

Subtype

- CatchBasinMH
- △ DitchInletMH
- Manhole
- MHChamber

MISC.STM_CatchBasin

● <all other values>

Subtype

- CatchBasin
- DitchInlet
- DoubleCatchBasin
- OtherInlet
- SideEntryCB
- Watercourses (NVCA)
- Watercourse (LSCRA)
- Municipal_Drain
- Storm Sewers
- Catch Basin Leads
- maj_inlet
- min_inlet
- SWMF outlet
- SWMF Pond FlowPath

Rip_Rap

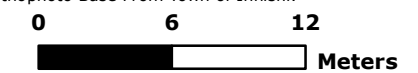
SWMF Forebay

Type

- Dry Forebay
- Wet Forebay
- SWMF Permpool
- PondBTM
- PondCrest
- RoadNetwork
- Assessment Parcel

Map is based on NAD83 UTM Zone 17N CRS1983 Adjusted.

Orthophoto Base From Town of Innisfil.



SWM Facility 7-10

Town of Innisfil Stormwater Management Facilities

Stormwater Management 7-11 WOODLAND PARK POND#1



Legend

MISC.STM_SWMPond

● <all other values>

Subtype

- LID_BioSwale
- LID_ExfiltrationTrench
- LID_RunoffRetention
- STMPond

MISC.STM_Manhole

● <all other values>

Subtype

- CatchBasinMH
- △ DitchInletMH
- Manhole
- MHCamber

MISC.STM_CatchBasin

● <all other values>

Subtype

- CatchBasin
- DitchInlet
- DoubleCatchBasin
- OtherInlet
- SideEntryCB
- Watercourses (NVCA)
- Watercourse (LSCRA)
- Municipal_Drain
- Storm Sewers
- Catch Basin Leads
- maj_inlet
- min_inlet
- SWMF outlet
- SWMF Pond FlowPath

Rip_Rap

SWMF Forebay

Type

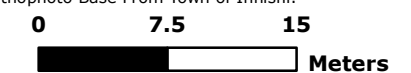
- ▨ Dry Forebay
- ▨ Wet Forebay
- SWMF Permpool
- PondBTM
- PondCrest

RoadNetwork

Assessment Parcel

Map is based on NAD83 UTM Zone 17N CRS1983 Adjusted.

Orthophoto Base From Town of Innisfil.



SWM Facility 7-11

Town of Innisfil Stormwater Management Facilities

Stormwater Management 7-12 WOODLAND PARK POND#2



Legend

MISC.STM_SWMPond

● <all other values>

Subtype

- LID_BioSwale
- LID_ExfiltrationTrench
- LID_RunoffRetention
- STMPond

MISC.STM_Manhole

● <all other values>

Subtype

- CatchBasinMH
- △ DitchInletMH
- Manhole
- MHCamber

MISC.STM_CatchBasin

● <all other values>

Subtype

- CatchBasin
- DitchInlet
- DoubleCatchBasin
- OtherInlet
- SideEntryCB
- Watercourses (NVCA)
- Watercourse (LSCRA)
- - Municipal_Drain
- Storm Sewers
- Catch Basin Leads
- maj_inlet
- min_inlet
- SWMF outlet
- SWMF Pond FlowPath

Rip_Rap

SWMF Forebay

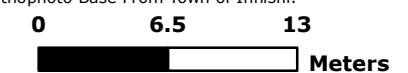
Type

- ▨ Dry Forebay
- ▨ Wet Forebay
- SWMF Permpool
- PondBTM
- PondCrest

- RoadNetwork
- Assessment Parcel

Map is based on NAD83 UTM Zone 17N CRS1983 Adjusted.

Orthophoto Base From Town of Innisfil.



Hatch Mott
MacDonald

SWM Facility 7-12

Town of Innisfil Stormwater Management Facilities

Stormwater Management 7-13 SOUTH REC. CENTRE



Legend

MISC.STM_SWMPond

● <all other values>

Subtype

- LID_BioSwale
- LID_ExfiltrationTrench
- LID_RunoffRetention
- STMPond

MISC.STM_Manhole

● <all other values>

Subtype

- CatchBasinMH
- △ DitchInletMH
- Manhole
- MHCamber

MISC.STM_CatchBasin

● <all other values>

Subtype

- CatchBasin
- DitchInlet
- DoubleCatchBasin
- OtherInlet
- SideEntryCB
- Watercourses (NVCA)
- Watercourse (LSCRA)
- - Municipal_Drain
- Storm Sewers
- Catch Basin Leads
- maj_inlet
- min_inlet
- SWMF outlet
- SWMF Pond FlowPath

Rip_Rap

SWMF Forebay

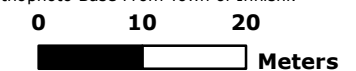
Type

- ▨ Dry Forebay
- ▨ Wet Forebay
- SWMF Permpool
- PondBTM
- PondCrest

— RoadNetwork
— Assessment Parcel

Map is based on NAD83 UTM Zone 17N CRS1983 Adjusted.

Orthophoto Base From Town of Innisfil.



Hatch Mott
MacDonald

SWM Facility 7-13

Town of Innisfil Stormwater Management Facilities

Stormwater Management 7-14 INNISFIL ADMIN BLD. BACK POND



Legend

MISC.STM_SWMPond

● <all other values>

Subtype

- LID_BioSwale
- LID_ExfiltrationTrench
- LID_RunoffRetention
- STMPond

MISC.STM_Manhole

● <all other values>

Subtype

- CatchBasinMH
- △ DitchInletMH
- Manhole
- MHChamber

MISC.STM_CatchBasin

● <all other values>

Subtype

- CatchBasin
- DitchInlet
- DoubleCatchBasin
- OtherInlet
- SideEntryCB
- Watercourses (NVCA)
- Watercourse (LSCRA)
- Municipal_Drain
- Storm Sewers
- Catch Basin Leads
- maj_inlet
- min_inlet
- SWMF outlet
- SWMF Pond FlowPath

□ Rip_Rap

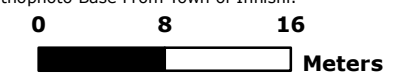
SWMF Forebay

Type

- ▨ Dry Forebay
- ▨ Wet Forebay
- SWMF Permpool
- PondBTM
- PondCrest
- RoadNetwork
- Assessment Parcel

Map is based on NAD83 UTM Zone 17N CRS1983 Adjusted.

Orthophoto Base From Town of Innisfil.



SWM Facility 7-14

Town of Innisfil Stormwater Management Facilities

Stormwater Management 7-15 INNISFIL ADMIN BLD. FRONT POND



Legend

MISC.STM_SWMPond

● <all other values>

Subtype

- LID_BioSwale
- LID_ExfiltrationTrench
- LID_RunoffRetention
- STMPond

MISC.STM_Manhole

● <all other values>

Subtype

- CatchBasinMH
- △ DitchInletMH
- Manhole
- MhChamber

MISC.STM_CatchBasin

● <all other values>

Subtype

- CatchBasin
- DitchInlet
- DoubleCatchBasin
- OtherInlet
- SideEntryCB
- Watercourses (NVCA)
- Watercourse (LSCRA)
- - Municipal_Drain
- Storm Sewers
- Catch Basin Leads
- maj_inlet
- min_inlet
- SWMF outlet
- SWMF Pond FlowPath

□ Rip_Rap

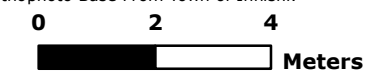
SWMF Forebay

Type

- ▨ Dry Forebay
- ▨ Wet Forebay
- SWMF Permpool
- PondBTM
- PondCrest
- RoadNetwork
- Assessment Parcel

Map is based on NAD83 UTM Zone 17N CRS1983 Adjusted.

Orthophoto Base From Town of Innisfil.



SWM Facility 7-15

Town of Innisfil Stormwater Management Facilities

Stormwater Management 7-3 WALLACE MILLS NORTH POND



Legend

MISC.STM_SWMPond

<all other values>

Subtype

- LID_BioSwale
- LID_ExfiltrationTrench
- LID_RunoffRetention
- STMPond

MISC.STM_Manhole

<all other values>

Subtype

- CatchBasinMH
- △ DitchInletMH
- Manhole
- MHChamber

MISC.STM_CatchBasin

<all other values>

Subtype

- CatchBasin
- DitchInlet
- DoubleCatchBasin
- OtherInlet
- SideEntryCB
- Watercourses (NVCA)
- Watercourse (LSCRA)
- Municipal_Drain
- Storm Sewers
- Catch Basin Leads
- maj_inlet
- min_inlet
- SWMF outlet
- SWMF Pond FlowPath

Rip_Rap

SWMF Forebay

Type

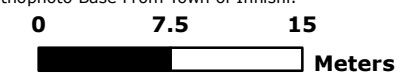
- ▨ Dry Forebay
- ▨ Wet Forebay
- SWMF Permpool
- PondBTM

PondCrest

- RoadNetwork
- Assessment Parcel

Map is based on NAD83 UTM Zone 17N CRS1983 Adjusted.

Orthophoto Base From Town of Innisfil.



SWM Facility 7-3

Town of Innisfil Stormwater Management Facilities

Stormwater Management 7-4 FORREST VALLEY POND



Legend

MISC.STM_SWMPond

● <all other values>

Subtype

- LID_BioSwale
- LID_ExfiltrationTrench
- LID_RunoffRetention
- STMPond

MISC.STM_Manhole

● <all other values>

Subtype

- CatchBasinMH
- △ DitchInletMH
- Manhole
- MHChamber

MISC.STM_CatchBasin

● <all other values>

Subtype

- CatchBasin
- DitchInlet
- DoubleCatchBasin
- OtherInlet
- SideEntryCB
- Watercourses (NVCA)
- Watercourse (LSCRA)
- - Municipal_Drain
- Storm Sewers
- Catch Basin Leads
- maj_inlet
- min_inlet
- SWMF outlet
- SWMF Pond FlowPath

□ Rip_Rap

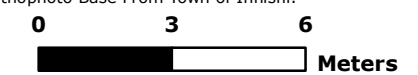
SWMF Forebay

Type

- ▨ Dry Forebay
- ▨ Wet Forebay
- ▨ SWMF Permpool
- ▨ PondBTM
- ▨ PondCrest
- RoadNetwork
- Assessment Parcel

Map is based on NAD83 UTM Zone 17N CRS1983 Adjusted.

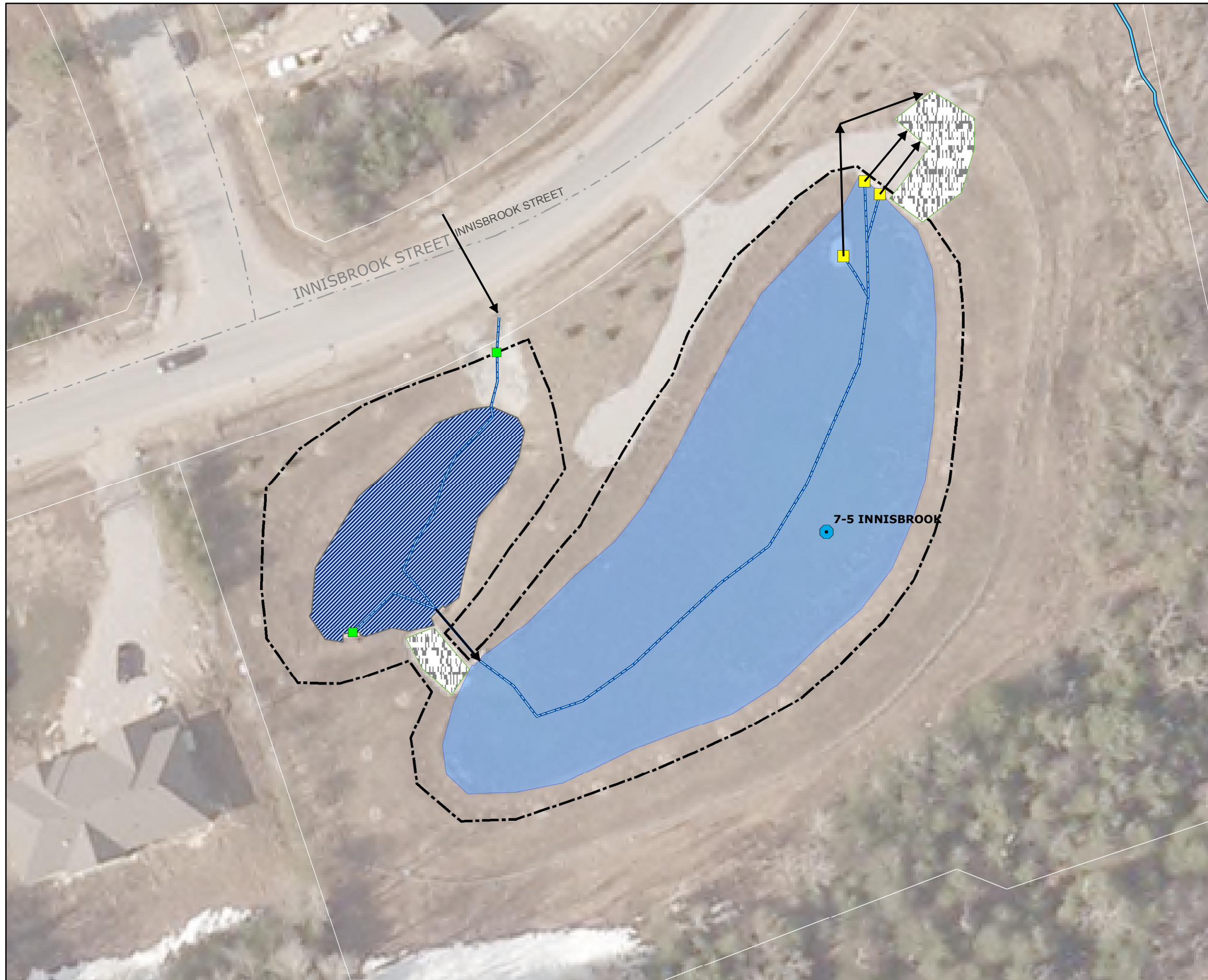
Orthophoto Base From Town of Innisfil.



SWM Facility 7-4

Town of Innisfil Stormwater Management Facilities

Stormwater Management 7-5 INNISBROOK



Legend

MISC.STM_SWMPond

● <all other values>

Subtype

- LID_BioSwale
- LID_ExfiltrationTrench
- LID_RunoffRetention
- STMPond

MISC.STM_Manhole

● <all other values>

Subtype

- CatchBasinMH
- △ DitchInletMH
- Manhole
- MHChamber

MISC.STM_CatchBasin

● <all other values>

Subtype

- CatchBasin
- DitchInlet
- DoubleCatchBasin
- OtherInlet
- SideEntryCB
- Watercourses (NVCA)
- Watercourse (LSCRA)
- Municipal_Drain
- Storm Sewers
- Catch Basin Leads
- maj_inlet
- min_inlet
- SWMF outlet
- SWMF Pond FlowPath

Rip_Rap

SWMF Forebay

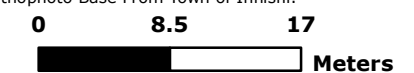
Type

- ▨ Dry Forebay
- ▨ Wet Forebay
- SWMF Permpool
- PondBTM
- PondCrest

— RoadNetwork
— Assessment Parcel

Map is based on NAD83 UTM Zone 17N CRS1983 Adjusted.

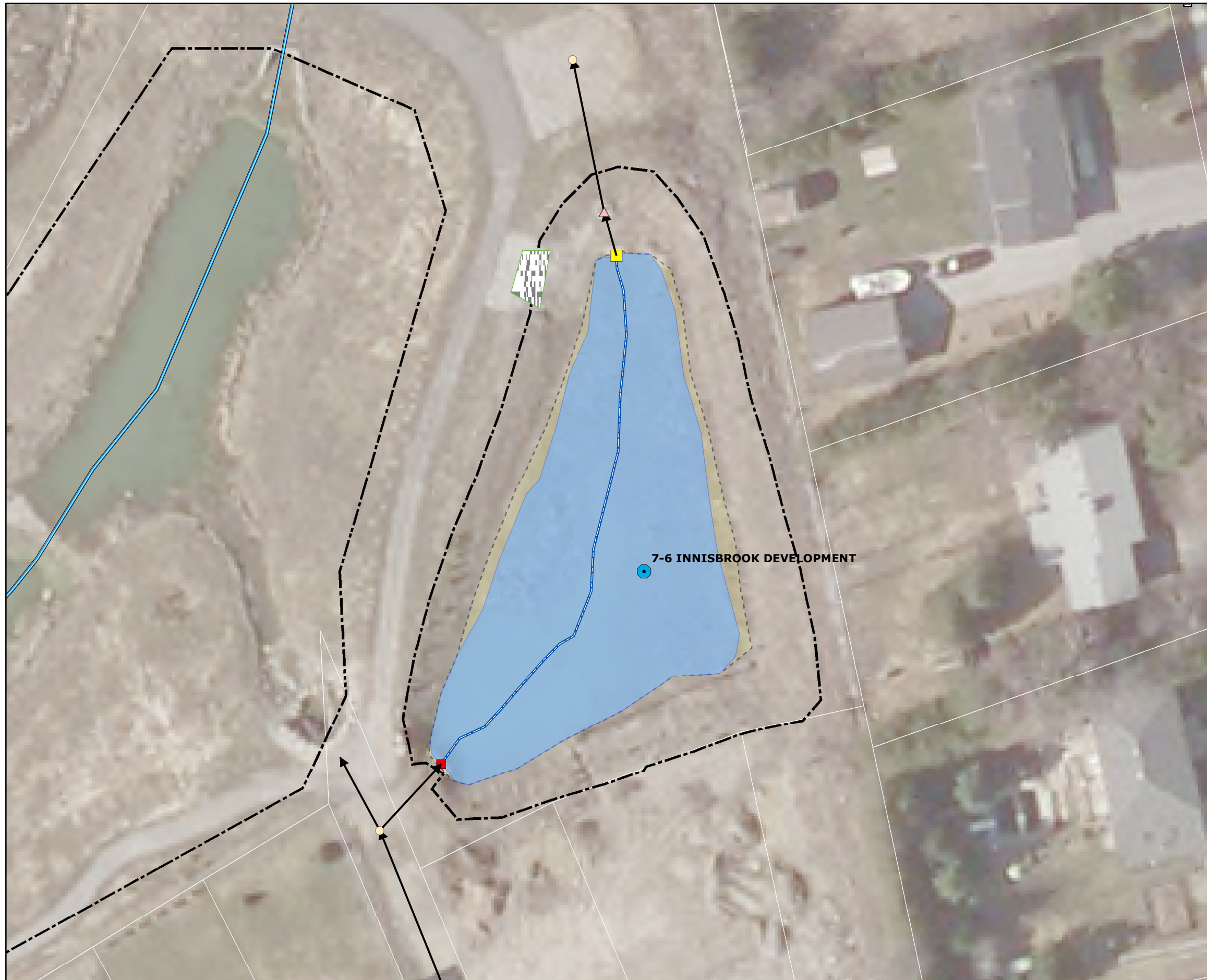
Orthophoto Base From Town of Innisfil.



SWM Facility 7-5

Town of Innisfil Stormwater Management Facilities

Stormwater Management 7-6 INNISBROOK DEVELOPMENT



Legend

MISC.STM_SWMPond

● <all other values>

Subtype

- LID_BioSwale
- LID_ExfiltrationTrench
- LID_RunoffRetention
- STMPond

MISC.STM_Manhole

● <all other values>

Subtype

- CatchBasinMH
- △ DitchInletMH
- Manhole
- MCHamber

MISC.STM_CatchBasin

● <all other values>

Subtype

- CatchBasin
- DitchInlet
- DoubleCatchBasin
- OtherInlet
- SideEntryCB
- Watercourses (NVCA)
- Watercourse (LSCRA)
- Municipal_Drain

Storm Sewers

→ Catch Basin Leads

■ maj_inlet

■ min_inlet

■ SWMF outlet

— SWMF Pond FlowPath

□ Rip_Rap

SWMF Forebay

Type

▨ Dry Forebay

▨ Wet Forebay

■ SWMF Permpool

■ PondBTM

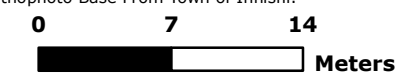
■ PondCrest

— RoadNetwork

— Assessment Parcel

Map is based on NAD83 UTM Zone 17N CRS1983 Adjusted.

Orthophoto Base From Town of Innisfil.



SWM Facility 7-6

Town of Innisfil Stormwater Management Facilities

Stormwater Management 7-7 GREEN ACRES



Legend

MISC.STM_SWMPond

● <all other values>

Subtype

- LID_BioSwale
- LID_ExfiltrationTrench
- LID_RunoffRetention
- STMPond

MISC.STM_Manhole

● <all other values>

Subtype

- CatchBasinMH
- △ DitchInletMH
- Manhole
- MHChamber

MISC.STM_CatchBasin

● <all other values>

Subtype

- CatchBasin
- DitchInlet
- DoubleCatchBasin
- OtherInlet
- SideEntryCB
- Watercourses (NVCA)
- Watercourse (LSCRA)
- Municipal_Drain
- Storm Sewers
- Catch Basin Leads
- maj_inlet
- min_inlet
- SWMF outlet
- SWMF Pond FlowPath

Rip_Rap

SWMF Forebay

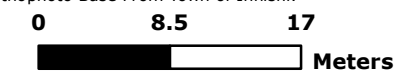
Type

- ▨ Dry Forebay
- ▨ Wet Forebay
- SWMF Permpool
- PondBTM
- PondCrest

- RoadNetwork
- Assessment Parcel

Map is based on NAD83 UTM Zone 17N CRS1983 Adjusted.

Orthophoto Base From Town of Innisfil.



SWM Facility 7-7

Town of Innisfil Stormwater Management Facilities

Stormwater Management 7-8 ORSI (BAYSHORE ESTATES)



Legend

MISC.STM_SWMPond

● <all other values>

Subtype

- LID_BioSwale
- LID_ExfiltrationTrench
- LID_RunoffRetention
- STMPond

MISC.STM_Manhole

● <all other values>

Subtype

- CatchBasinMH
- △ DitchInletMH
- Manhole
- MHCamber

MISC.STM_CatchBasin

● <all other values>

Subtype

- CatchBasin
- DitchInlet
- DoubleCatchBasin
- OtherInlet
- SideEntryCB
- Watercourses (NVCA)
- Watercourse (LSCRA)
- - Municipal_Drain
- Storm Sewers
- Catch Basin Leads
- maj_inlet
- min_inlet
- SWMF outlet
- SWMF Pond FlowPath

Rip_Rap

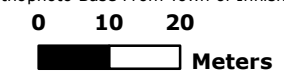
SWMF Forebay

Type

- ▨ Dry Forebay
- ▨ Wet Forebay
- SWMF Permpool
- PondBTM
- PondCrest
- RoadNetwork
- Assessment Parcel

Map is based on NAD83 UTM Zone 17N CRS1983 Adjusted.

Orthophoto Base From Town of Innisfil.



SWM Facility 7-8

Town of Innisfil Stormwater Management Facilities

Stormwater Management 7-9 BMP4C2 (Creek)



Legend

MISC.STM_SWMPond

● <all other values>

Subtype

- LID_BioSwale
- LID_ExfiltrationTrench
- LID_RunoffRetention
- STMPond

MISC.STM_Manhole

● <all other values>

Subtype

- CatchBasinMH
- △ DitchInletMH
- Manhole
- MHChamber

MISC.STM_CatchBasin

● <all other values>

Subtype

- CatchBasin
- DitchInlet
- DoubleCatchBasin
- OtherInlet
- SideEntryCB
- Watercourses (NVCA)
- Watercourse (LSCRA)
- Municipal_Drain
- Storm Sewers
- Catch Basin Leads
- maj_inlet
- min_inlet
- SWMF outlet
- SWMF Pond FlowPath
- Rip_Rap

SWMF Forebay

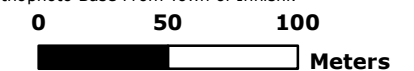
Type

- ▨ Dry Forebay
- ▨ Wet Forebay
- SWMF Permpool
- PondBTM
- PondCrest

- RoadNetwork
- Assessment Parcel

Map is based on NAD83 UTM Zone 17N CRS1983 Adjusted.

Orthophoto Base From Town of Innisfil.



SWM Facility 7-9

Town of Innisfil Stormwater Management Facilities

Stormwater Management 8-1 INDUSTRIAL



Legend

MISC.STM_SWMPond

<all other values>

Subtype

- LID_BioSwale
- LID_ExfiltrationTrench
- LID_RunoffRetention
- STMPond

MISC.STM_Manhole

<all other values>

Subtype

- CatchBasinMH
- △ DitchInletMH
- Manhole
- MHChamber

MISC.STM_CatchBasin

<all other values>

Subtype

- CatchBasin
- DitchInlet
- DoubleCatchBasin
- OtherInlet
- SideEntryCB

- Watercourses (NVCA)
- Watercourse (LSCRA)

— Municipal_Drain

→ Storm Sewers

→ Catch Basin Leads

■ maj_inlet

■ min_inlet

■ SWMF outlet

— SWMF Pond FlowPath

□ Rip_Rap

SWMF Forebay

Type

▨ Dry Forebay

▨ Wet Forebay

▨ SWMF Permpool

▨ PondBTM

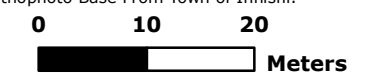
▨ PondCrest

— RoadNetwork

— Assessment Parcel

Map is based on NAD83 UTM Zone 17N CRS1983 Adjusted.

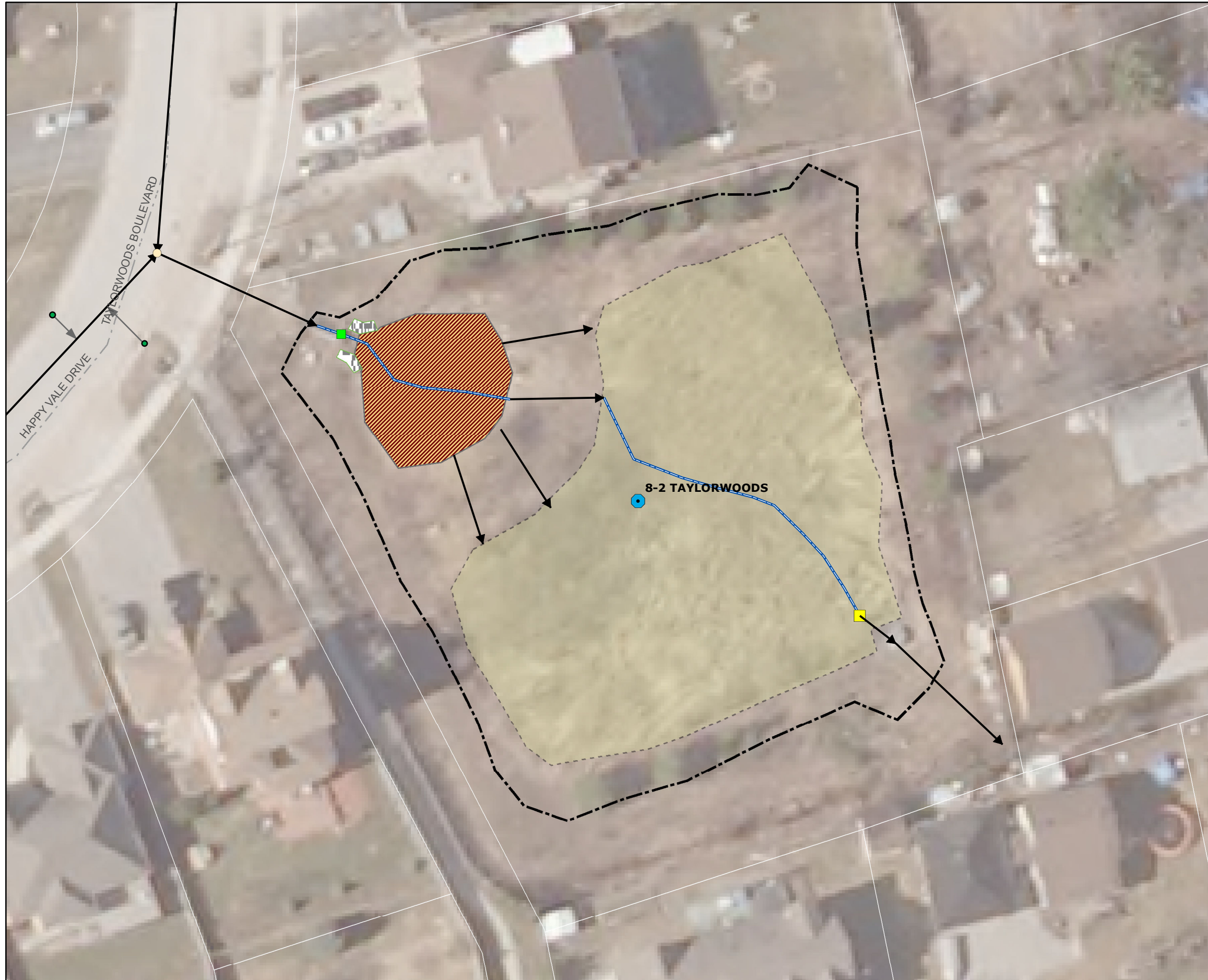
Orthophoto Base From Town of Innisfil.



SWM Facility 8-1

Town of Innisfil Stormwater Management Facilities

Stormwater Management 8-2 TAYLORWOODS



Legend

MISC.STM_SWMPond

● <all other values>

Subtype

- LID_BioSwale
- LID_ExfiltrationTrench
- LID_RunoffRetention
- STMPond

MISC.STM_Manhole

● <all other values>

Subtype

- CatchBasinMH
- △ DitchInletMH
- Manhole
- MHCamber

MISC.STM_CatchBasin

● <all other values>

Subtype

- CatchBasin
- DitchInlet
- DoubleCatchBasin
- OtherInlet
- SideEntryCB
- Watercourses (NVCA)
- Watercourse (LSCRA)
- Municipal_Drain
- Storm Sewers
- Catch Basin Leads
- maj_inlet
- min_inlet
- SWMF outlet
- SWMF Pond FlowPath

Rip_Rap

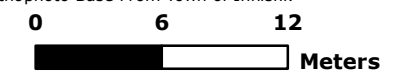
SWMF Forebay

Type

- ▨ Dry Forebay
- ▨ Wet Forebay
- ▨ SWMF Permpool
- ▨ PondBTM
- ▨ PondCrest
- RoadNetwork
- ▭ Assessment Parcel

Map is based on NAD83 UTM Zone 17N CRS1983 Adjusted.

Orthophoto Base From Town of Innisfil.



SWM Facility 8-2

Town of Innisfil Stormwater Management Facilities

Stormwater Management 8-3 CROSSROADS



Legend

MISC.STM_SWMPond

● <all other values>

Subtype

- LID_BioSwale
- LID_ExfiltrationTrench
- LID_RunoffRetention
- STMPond

MISC.STM_Manhole

● <all other values>

Subtype

- CatchBasinMH
- △ DitchInletMH
- Manhole
- MHChamber

MISC.STM_CatchBasin

● <all other values>

Subtype

- CatchBasin
- DitchInlet
- DoubleCatchBasin
- OtherInlet
- SideEntryCB
- Watercourses (NVCA)
- Watercourse (LSCRA)
- Municipal_Drain
- Storm Sewers
- Catch Basin Leads
- maj_inlet
- min_inlet
- SWMF outlet
- SWMF Pond FlowPath

□ Rip_Rap

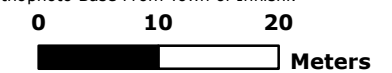
SWMF Forebay

Type

- ▨ Dry Forebay
- ▨ Wet Forebay
- SWMF Permpool
- PondBTM
- PondCrest
- RoadNetwork
- Assessment Parcel

Map is based on NAD83 UTM Zone 17N CRS1983 Adjusted.

Orthophoto Base From Town of Innisfil.



SWM Facility 8-3

Town of Innisfil Stormwater Management Facilities

Stormwater Management 8-4 CROSSROADS POND #2



Legend

MISC.STM_SWMPond

● <all other values>

Subtype

- LID_BioSwale
- LID_ExfiltrationTrench
- LID_RunoffRetention
- STMPond

MISC.STM_Manhole

● <all other values>

Subtype

- CatchBasinMH
- △ DitchInletMH
- Manhole
- MHChamber

MISC.STM_CatchBasin

● <all other values>

Subtype

- CatchBasin
- DitchInlet
- DoubleCatchBasin
- OtherInlet
- SideEntryCB
- Watercourses (NVCA)
- Watercourse (LSCRA)
- Municipal_Drain
- Storm Sewers
- Catch Basin Leads
- maj_inlet
- min_inlet
- SWMF outlet
- SWMF Pond FlowPath

Rip_Rap

□ Rip_Rap

SWMF Forebay

Type

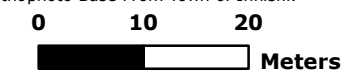
- ▨ Dry Forebay
- ▨ Wet Forebay
- SWMF Permpool
- PondBTM
- PondCrest

— RoadNetwork

□ Assessment Parcel

Map is based on NAD83 UTM Zone 17N CRS1983 Adjusted.

Orthophoto Base From Town of Innisfil.



SWM Facility 8-4

Town of Innisfil Stormwater Management Facilities

Stormwater Management 8-5 SKIVEREEN POND



Legend

MISC.STM_SWMPond

● <all other values>

Subtype

- LID_BioSwale
- LID_ExfiltrationTrench
- LID_RunoffRetention
- STMPond

MISC.STM_Manhole

● <all other values>

Subtype

- CatchBasinMH
- △ DitchInletMH
- Manhole
- MHChamber

MISC.STM_CatchBasin

● <all other values>

Subtype

- CatchBasin
- DitchInlet
- DoubleCatchBasin
- OtherInlet
- SideEntryCB
- Watercourses (NVCA)
- Watercourse (LSCRA)
- Municipal_Drain
- Storm Sewers
- Catch Basin Leads
- maj_inlet
- min_inlet
- SWMF outlet

— SWMF Pond FlowPath

□ Rip_Rap

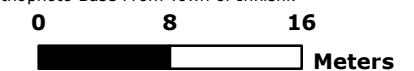
SWMF Forebay

Type

- Dry Forebay
- Wet Forebay
- SWMF Permpool
- PondBTM
- PondCrest
- RoadNetwork
- Assessment Parcel

Map is based on NAD83 UTM Zone 17N CRS1983 Adjusted.

Orthophoto Base From Town of Innisfil.



SWM Facility 8-5

Town of Innisfil Stormwater Management Facilities

Stormwater Management 8-6 PRATT ALCONA NORTH



Legend

MISC.STM_SWMPond

● <all other values>

Subtype

- LID_BioSwale
- LID_ExfiltrationTrench
- LID_RunoffRetention
- STMPond

MISC.STM_Manhole

● <all other values>

Subtype

- CatchBasinMH
- △ DitchInletMH
- Manhole
- MHChamber

MISC.STM_CatchBasin

● <all other values>

Subtype

- CatchBasin
- DitchInlet
- DoubleCatchBasin
- OtherInlet
- SideEntryCB
- Watercourses (NVCA)
- Watercourse (LSCRA)
- Municipal_Drain
- Storm Sewers
- Catch Basin Leads
- maj_inlet
- min_inlet
- SWMF outlet
- SWMF Pond FlowPath

Rip_Rap

SWMF Forebay

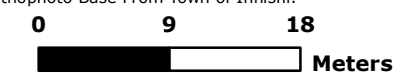
Type

- ▨ Dry Forebay
- ▨ Wet Forebay
- SWMF Permpool
- PondBTM
- PondCrest

- RoadNetwork
- Assessment Parcel

Map is based on NAD83 UTM Zone 17N CRS1983 Adjusted.

Orthophoto Base From Town of Innisfil.



SWM Facility 8-6

Town of Innisfil Stormwater Management Facilities

Stormwater Management 8-7 PRATT D'AMICO



Legend

MISC.STM_SWMPond

● <all other values>

Subtype

- LID_BioSwale
- LID_ExfiltrationTrench
- LID_RunoffRetention
- STMPond

MISC.STM_Manhole

● <all other values>

Subtype

- CatchBasinMH
- △ DitchInletMH
- Manhole
- MHChamber

MISC.STM_CatchBasin

● <all other values>

Subtype

- CatchBasin
- DitchInlet
- DoubleCatchBasin
- OtherInlet
- SideEntryCB
- Watercourses (NVCA)
- Watercourse (LSCRA)
- Municipal_Drain
- Storm Sewers
- Catch Basin Leads
- maj_inlet
- min_inlet
- SWMF outlet
- SWMF Pond FlowPath

Rip_Rap

SWMF Forebay

Type

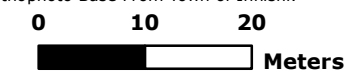
- ▨ Dry Forebay
- ▨ Wet Forebay
- SWMF Permpool
- PondBTM
- PondCrest

RoadNetwork

— Assessment Parcel

Map is based on NAD83 UTM Zone 17N CRS1983 Adjusted.

Orthophoto Base From Town of Innisfil.



Hatch Mott
MacDonald

SWM Facility 8-7

Town of Innisfil Stormwater Management Facilities

Stormwater Management 8-9 ADULLUM



Legend

MISC.STM_SWMPond

● <all other values>

Subtype

- LID_BioSwale
- LID_ExfiltrationTrench
- LID_RunoffRetention
- STMPond

MISC.STM_Manhole

● <all other values>

Subtype

- CatchBasinMH
- △ DitchInletMH
- Manhole
- MHChamber

MISC.STM_CatchBasin

● <all other values>

Subtype

- CatchBasin
- DitchInlet
- DoubleCatchBasin
- OtherInlet
- SideEntryCB
- Watercourses (NVCA)
- Watercourse (LSCRA)
- - Municipal_Drain
- Storm Sewers
- Catch Basin Leads
- maj_inlet
- min_inlet
- SWMF outlet
- SWMF Pond FlowPath

Rip_Rap

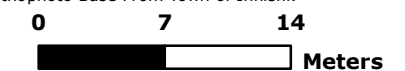
SWMF Forebay

Type

- ▨ Dry Forebay
- ▨ Wet Forebay
- SWMF Permpool
- PondBTM
- PondCrest
- RoadNetwork
- Assessment Parcel

Map is based on NAD83 UTM Zone 17N CRS1983 Adjusted.

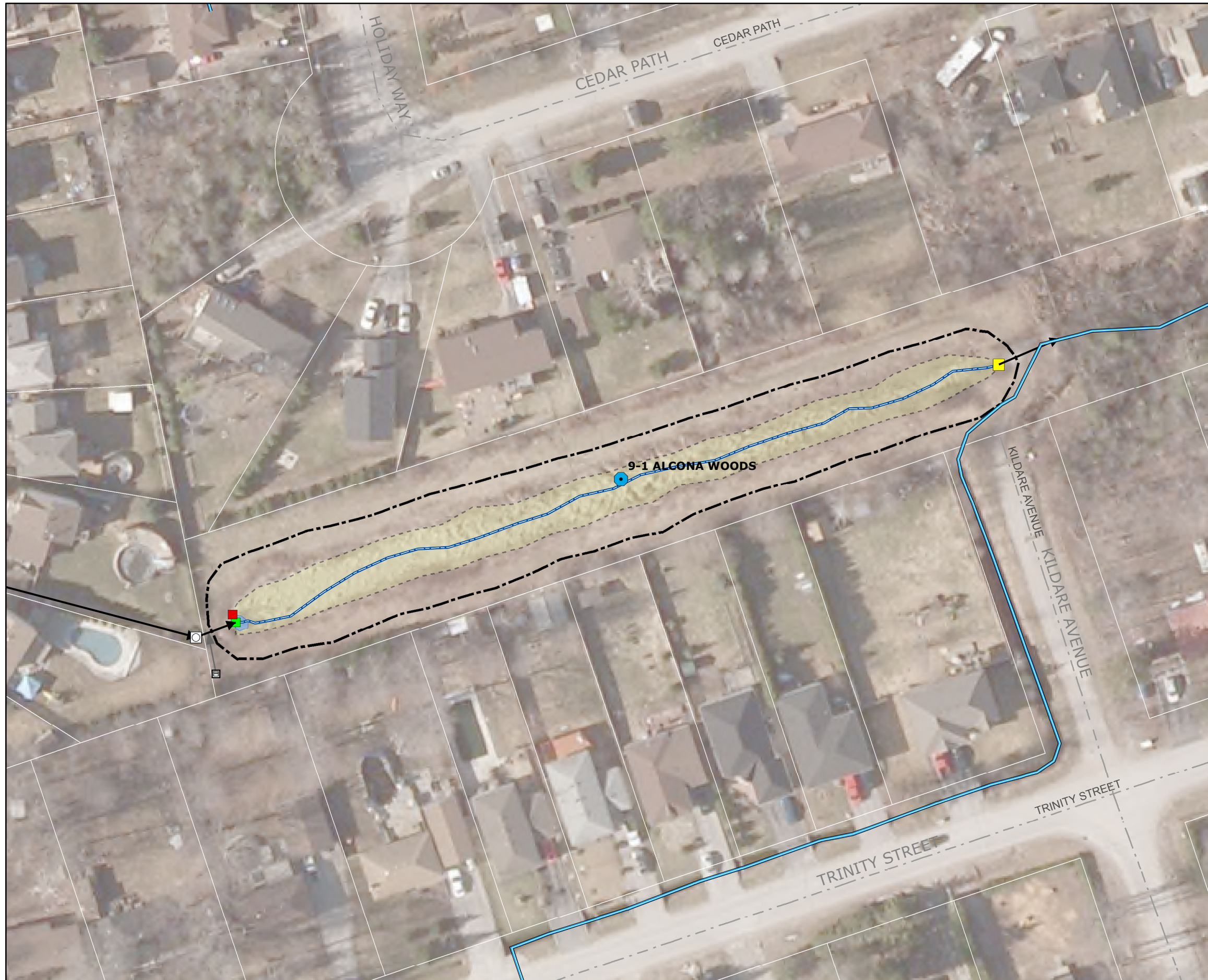
Orthophoto Base From Town of Innisfil.



SWM Facility 8-9

Town of Innisfil Stormwater Management Facilities

Stormwater Management 9-1 ALCONA WOODS



Legend

MISC.STM_SWMPond

● <all other values>

Subtype

- LID_BioSwale
- LID_ExfiltrationTrench
- LID_RunoffRetention
- STMPond

MISC.STM_Manhole

● <all other values>

Subtype

- CatchBasinMH
- △ DitchInletMH
- Manhole
- MHChamber

MISC.STM_CatchBasin

● <all other values>

Subtype

- CatchBasin
- DitchInlet
- DoubleCatchBasin
- OtherInlet
- SideEntryCB
- Watercourses (NVCA)
- Watercourse (LSCRA)
- Municipal_Drain
- Storm Sewers
- Catch Basin Leads
- maj_inlet
- min_inlet
- SWMF outlet
- SWMF Pond FlowPath

Rip_Rap

SWMF Forebay

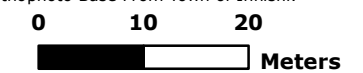
Type

- ▨ Dry Forebay
- ▨ Wet Forebay
- ▨ SWMF Permpool
- ▨ PondBTM
- ▨ PondCrest

- RoadNetwork
- Assessment Parcel

Map is based on NAD83 UTM Zone 17N CRS1983 Adjusted.

Orthophoto Base From Town of Innisfil.



SWM Facility 9-1

Town of Innisfil Stormwater Management Facilities

Stormwater Management 9-2 SOUTHVIEW



Legend

MISC.STM_SWMPond

● <all other values>

Subtype

- LID_BioSwale
- LID_ExfiltrationTrench
- LID_RunoffRetention
- STMPond

MISC.STM_Manhole

● <all other values>

Subtype

- CatchBasinMH
- △ DitchInletMH
- Manhole
- MHChamber

MISC.STM_CatchBasin

● <all other values>

Subtype

- CatchBasin
- DitchInlet
- DoubleCatchBasin
- OtherInlet
- SideEntryCB
- Watercourses (NVCA)
- Watercourse (LSCRA)
- Municipal_Drain
- Storm Sewers
- Catch Basin Leads
- maj_inlet
- min_inlet
- SWMF outlet
- SWMF Pond FlowPath
- Rip_Rap

SWMF Forebay

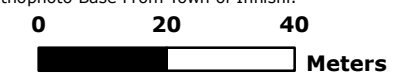
Type

- ▨ Dry Forebay
- ▨ Wet Forebay
- ▨ SWMF Permpool
- ▨ PondBTM
- ▨ PondCrest

- RoadNetwork
- Assessment Parcel

Map is based on NAD83 UTM Zone 17N CRS1983 Adjusted.

Orthophoto Base From Town of Innisfil.



SWM Facility 9-2

Town of Innisfil Stormwater Management Facilities

Stormwater Management 9-3 VICTORIA GREEN



Legend

MISC.STM_SWMPond

● <all other values>

Subtype

- LID_BioSwale
- LID_ExfiltrationTrench
- LID_RunoffRetention
- STMPond

MISC.STM_Manhole

● <all other values>

Subtype

- CatchBasinMH
- △ DitchInletMH
- Manhole
- MHChamber

MISC.STM_CatchBasin

● <all other values>

Subtype

- CatchBasin
- DitchInlet
- DoubleCatchBasin
- OtherInlet
- SideEntryCB
- Watercourses (NVCA)
- Watercourse (LSCRA)
- - Municipal_Drain
- Storm Sewers
- Catch Basin Leads
- maj_inlet
- min_inlet
- SWMF outlet

— SWMF Pond FlowPath

□ Rip_Rap

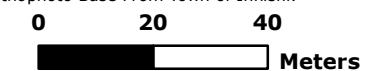
SWMF Forebay

Type

- ▨ Dry Forebay
- ▨ Wet Forebay
- ▨ SWMF Permpool
- ▨ PondBTM
- ▨ PondCrest
- RoadNetwork
- Assessment Parcel

Map is based on NAD83 UTM Zone 17N CRS1983 Adjusted.

Orthophoto Base From Town of Innisfil.



SWM Facility 9-3

Town of Innisfil Stormwater Management Facilities

Stormwater Management 9-4 DORAL EAST



Legend

MISC.STM_SWMPond

● <all other values>

Subtype

- LID_BioSwale
- LID_ExfiltrationTrench
- LID_RunoffRetention
- STMPond

MISC.STM_Manhole

● <all other values>

Subtype

- CatchBasinMH
- △ DitchInletMH
- Manhole
- MHChamber

MISC.STM_CatchBasin

● <all other values>

Subtype

- CatchBasin
- DitchInlet
- DoubleCatchBasin
- OtherInlet
- SideEntryCB
- Watercourse (NVCA)
- Watercourse (LSCRA)
- Municipal_Drain
- Storm Sewers
- Catch Basin Leads
- maj_inlet
- min_inlet
- SWMF outlet

— SWMF Pond FlowPath

□ Rip_Rap

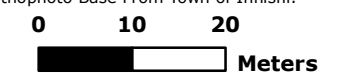
SWMF Forebay

Type

- ▨ Dry Forebay
- ▨ Wet Forebay
- SWMF Permpool
- PondBTM
- PondCrest
- RoadNetwork
- Assessment Parcel

Map is based on NAD83 UTM Zone 17N CRS1983 Adjusted.

Orthophoto Base From Town of Innisfil.



SWM Facility 9-4

Town of Innisfil Stormwater Management Facilities

Stormwater Management 9-5 DORAL WEST



Legend

MISC.STM_SWMPond

● <all other values>

Subtype

- LID_BioSwale
- LID_ExfiltrationTrench
- LID_RunoffRetention
- STMPond

MISC.STM_Manhole

● <all other values>

Subtype

- CatchBasinMH
- △ DitchInletMH
- Manhole
- MHChamber

MISC.STM_CatchBasin

● <all other values>

Subtype

- CatchBasin
- DitchInlet
- DoubleCatchBasin
- OtherInlet
- SideEntryCB
- Watercourses (NVCA)
- Watercourse (LSCRA)
- Municipal_Drain
- Storm Sewers
- Catch Basin Leads
- maj_inlet
- min_inlet
- SWMF outlet
- SWMF Pond FlowPath

Rip_Rap

SWMF Forebay

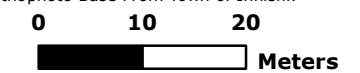
Type

- ▨ Dry Forebay
- ▨ Wet Forebay
- SWMF Permpool
- PondBTM
- PondCrest

- RoadNetwork
- Assessment Parcel

Map is based on NAD83 UTM Zone 17N CRS1983 Adjusted.

Orthophoto Base From Town of Innisfil.



SWM Facility 9-5