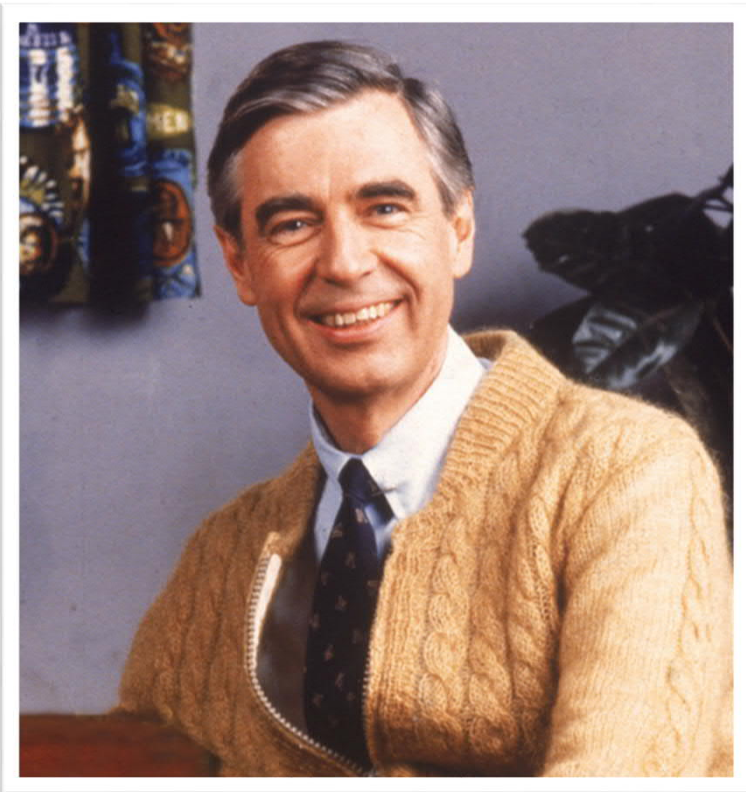


Your Town Square





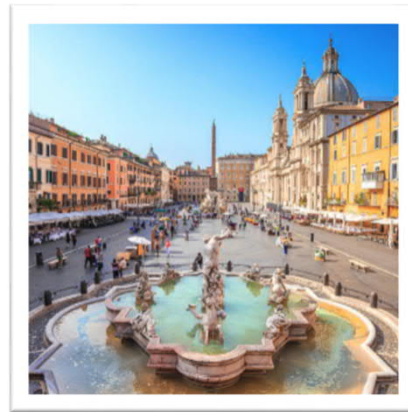
“Human relationships are primary in all of living. When the gusty winds blow and shake our lives, if we know that people care about us, we may bend with the wind... but we won't break.”




Innisfil

What is a Town Square?

- A centralized space in town that...
 - Creates a sense of identity
 - Offers diverse opportunities
 - Encourages a sense of belonging
 - Brings people together



Where?




Innisfil

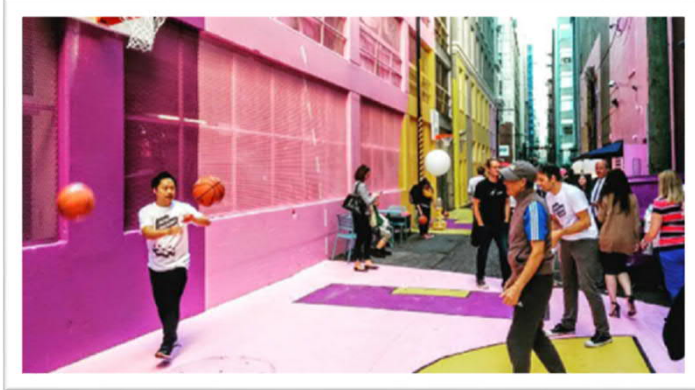
Background: Our Official Plan

Our Place Vision

“Innisfil will grow and thrive based on the places and destinations at the heart of Innisfil – the places where we recreate, shop, eat, gather, interact, and most of all build the social and emotional ties that hold the community together... **A place to grow, a place to connect, a place to work and a place to call home.**”



Placemaking



“What defines the character of a city is its public space, not its private space”
– Dr. Joan Clos, Executive Director, UN Habitat

Placemaking

★ Build Local Economies Through Markets ★



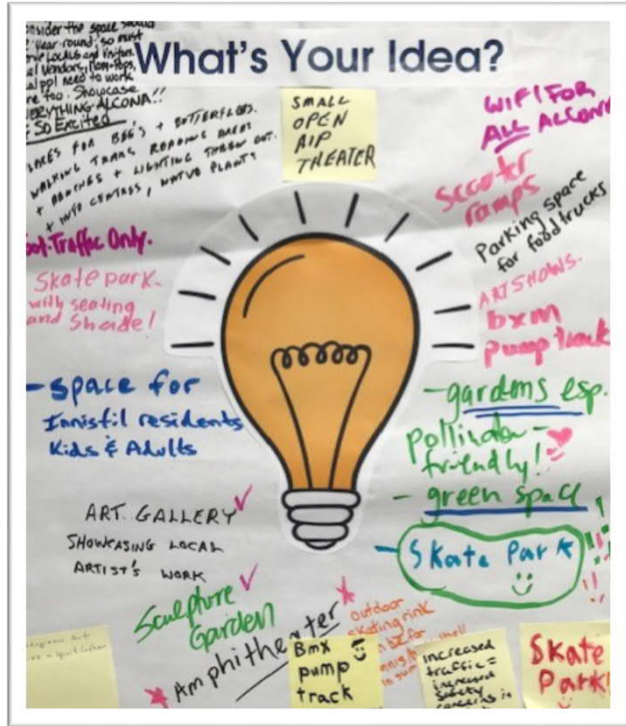
Create
Squares and
★ Parks as ★
Multi-Use
Destinations



We are Listening



*Library Staff
Workshop*



open house



online survey

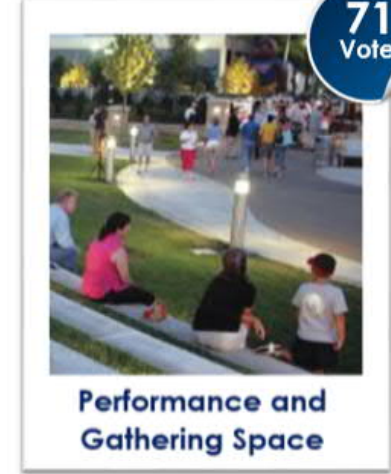



Innisfil

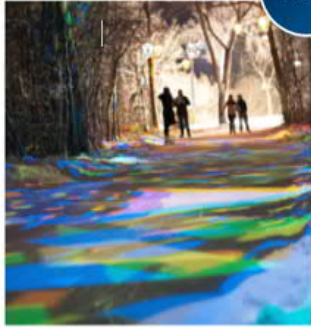


Dotmocracy Activity

- 596 votes cast

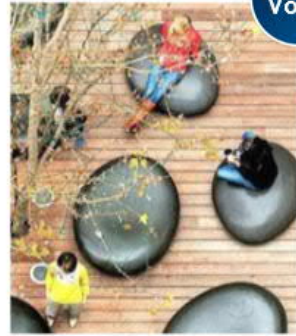


50
Votes



Skating Trail

47
Votes



Seating

44
Votes



Shade Structures

36
votes



Water Feature

34
Votes



Public Art

30
Votes



Pavilion

19
Votes



Firepits

15
Votes



Seating

What We Heard

Firepits would be really cool. As well as an outdoor entertainment area.

I would love it if this space could help local businesses.

This would be awesome for local artisans to showcase their handmade creations, for anyone looking for unique one-of-a-kind 'gems' AND ultimately the town.

What We Heard

Greenspaces that will provide the opportunity for informal gathering spaces, including benches or picnic tables.

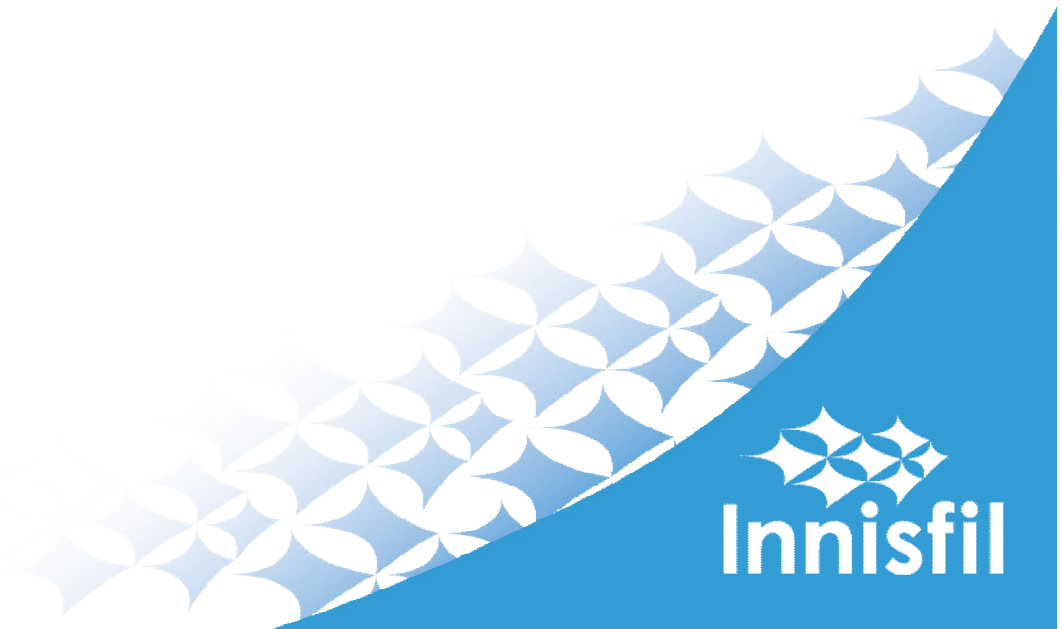
Walkable paths around the entire site, connecting streets and sidewalks.

Accommodate inclement weather and the use for all types of functions and events.
Examples: music, markets, programs, workshops, art displays, holiday celebrations and much more.

I think it would be great if the trail was also a "book walk"

The Schematic

Incorporating all the Great ideas we received Town Staff retained Landscape Architect PMA Landscape Architects Ltd. to come up with a Schematic of the Space



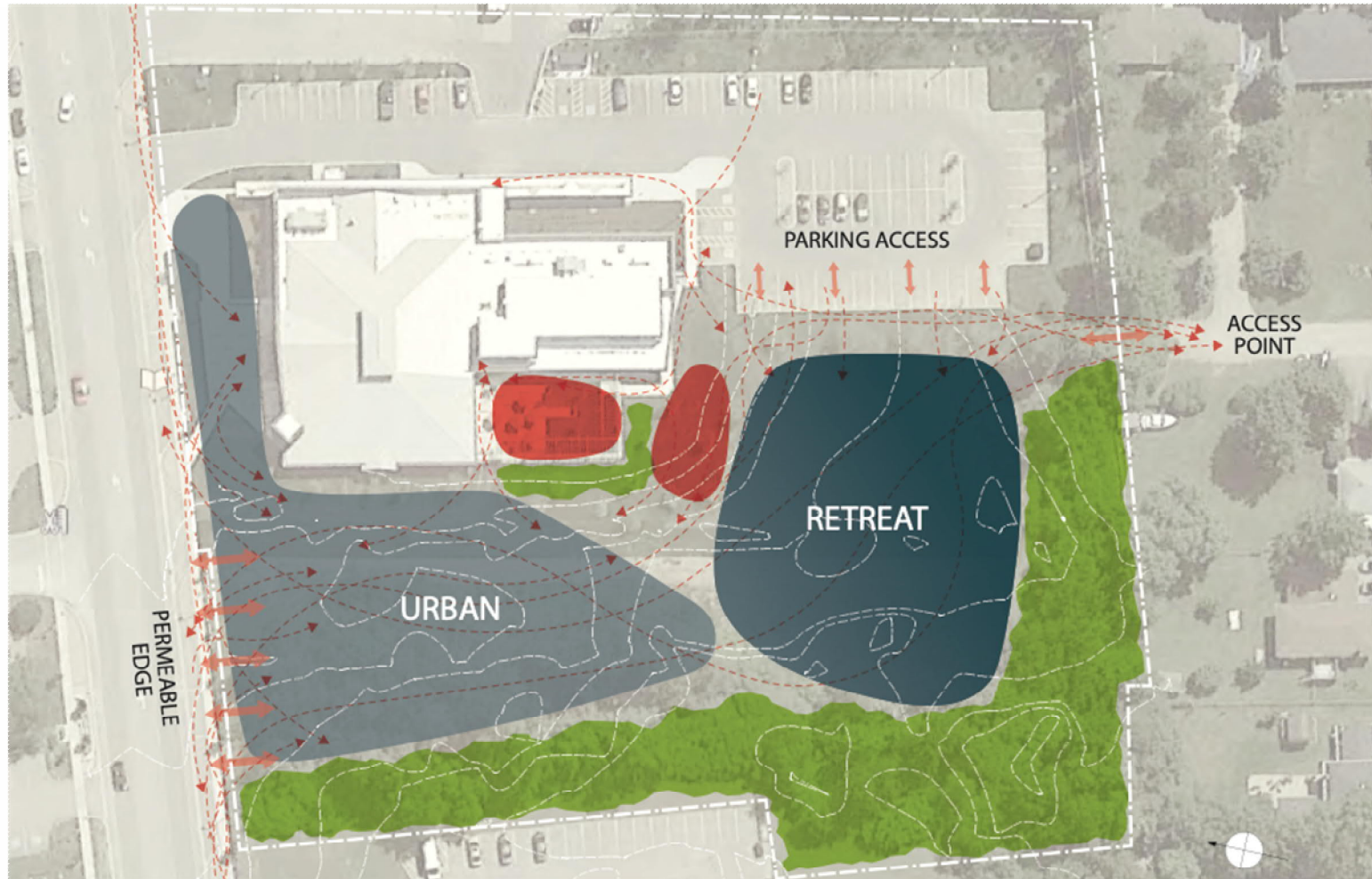
The Schematic

Goals

- + Be connected
- + Be social
- + Be a high-quality civic space
- + Be engaging and inviting all-year round, day and night
- + Be artful, green + flexible
- + Be comfortable and safe for all users
- + Be experientially and materially rich
- + Be for everyone - all ages and abilities



The Schematic

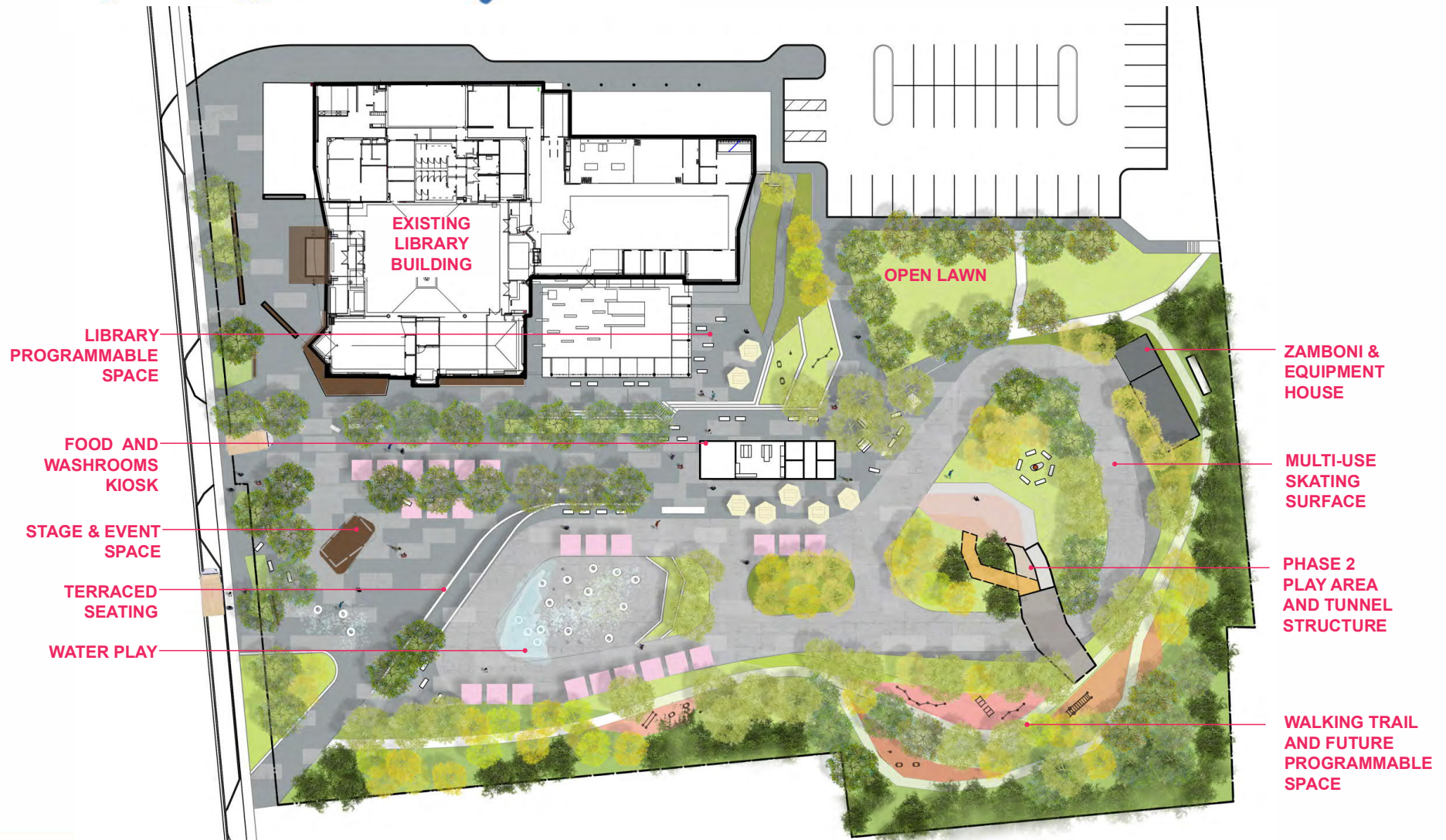


The Schematic



INITIAL CONCEPTS

The Schematic



The Schematic



The Schematic



The Schematic



The Schematic



Innisfil

The Schematic



Budget



What about Parking?



What's Next?

- Schematic will be launched on the Get Involved Innisfil Website
- The Town has retained a Project Manager p2i strategies ltd. and working with the p2i the Town will Issue Design/Build contract to Bring the Town Square TO LIFE!!
- We will present updates to Council during both the Design and Construction Phases
- Construction Complete by Late 2020 with a Super Awesome GRAND OPENING!!!

Questions?

